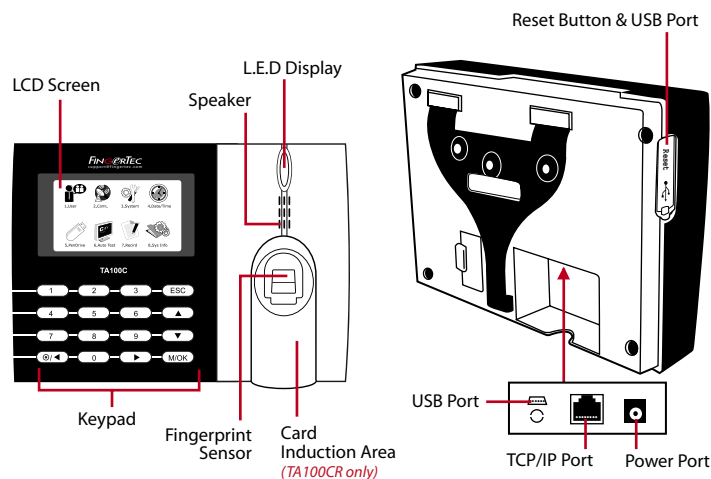


TA100C Series
Color Time Attendance System

Quick Start Guide

OVERVIEW



1 Setting the Date and Time

- 1 Press **Menu**, select **Date/Time** and set the value.
- 2 Press **OK** to save the settings, then press **ESC** to return to the main screen.

2 Enrolling Fingerprints

- 1 Press **Menu**, go to **User Manage** and select **New User**.
- 2 Key in a **User ID**, select **Enroll FP** and place the finger on the scanner 3 times according to the instructions.
- 3 Press **OK** to save then press **ESC**. Press **OK** again, and then **ESC** again to return to the main screen.

3 Communication Settings

Press **Menu** > **COMM** > **Network** > Set value for IP/Subnet mask/Gateway > **OK (Save)** > **Security** > **Device ID** > **Set 1** > **OK (Save)** > **ESC** to return to main screen > **Restart** to apply changes.

Default set value:

IP address - 192.168.1.201
Subnet mask - 255.255.255.0
Gateway - 192.168.1.1
Dev ID - 1
Password - 0

4 Login to TimeTec Cloud to start

timeTec

- 1 To insert TimeTec Cloud server IP > Press **Menu** > **COMM** > **Web Setup** > **Webserver IP (50.18.154.243)** > **Webserver Port (80)** > **OK (Save)** > **ESC** to return to main screen > **Restart** to apply changes
- 2 Login to TimeTec Cloud to start to setup your company
 - Visit to www.timeteccloud.com
 - Login by using your username (email address) and password
 - Go to **Configuration** > **Wizard** > **Setup Wizard**
 - Follow the instructions under **Setup Wizard**

The Quick Start Guide is intended to provide the user with simple instructions on how to setup the terminal date/time and communication as well as to perform fingerprint and card enrollment and verification. For more details on other topics of terminal management, refer to the terminal's hardware user manual available in the package or online at www.timeteccloud.com/download/qsg/QSG-TA100C_TTC-E.pdf