

# PRODUCT CATALOGUE

## CLOUD-BASED SMART SOLUTIONS

Comprehensive solutions for corporate workforce, human resources, security and smart offices with a variety of seamless IoT and biometric hardware integration

**PDPA AND GDPR  
COMPLIANT**  
Suitable for  
worldwide use

**INTEGRATION**  
Seamless  
integration with  
all systems, API  
available

**ROBUST BACKEND  
SECURITY**  
ISO27001,  
CMMi Level 3  
certified and  
penetration tests

**24/7  
SUPPORT**

**SERVICE LEVEL  
AGREEMENT  
(SLA)**  
After sales service  
guaranteed

**INFRASTRUCTURE**  
Workload run on Amazon  
Web Services and Google  
Cloud Platforms

**MOBILE APP  
READY**  
iOS & Android

**14 LANGUAGES**  
English, Malay,  
Chinese Traditional,  
Chinese Simplified, Japanese,  
Arabic, Spanish, Indonesian,  
Thai, Vietnamese, German,  
Portuguese, Hindi, Turkish  
and more.



# TABLE OF CONTENTS

## TIMETEC SMART WORKFORCE PLATFORM

1. <b>EMPLOYEE PROFILE</b> MANAGEMENT	4
2. <b>TIME, ATTENDANCE &amp; SCHEDULING</b> MANAGEMENT	6
3. <b>EMPLOYEE LEAVE</b> MANAGEMENT	14
4. <b>RECRUITMENT</b> MANAGEMENT	18

<b>TIMETEC SMART OFFICE PLATFORM</b>	<b>33</b>
1. <b>VISITOR</b> MANAGEMENT	34
2. <b>PARKING</b> MANAGEMENT	38

## ABOUT US 53

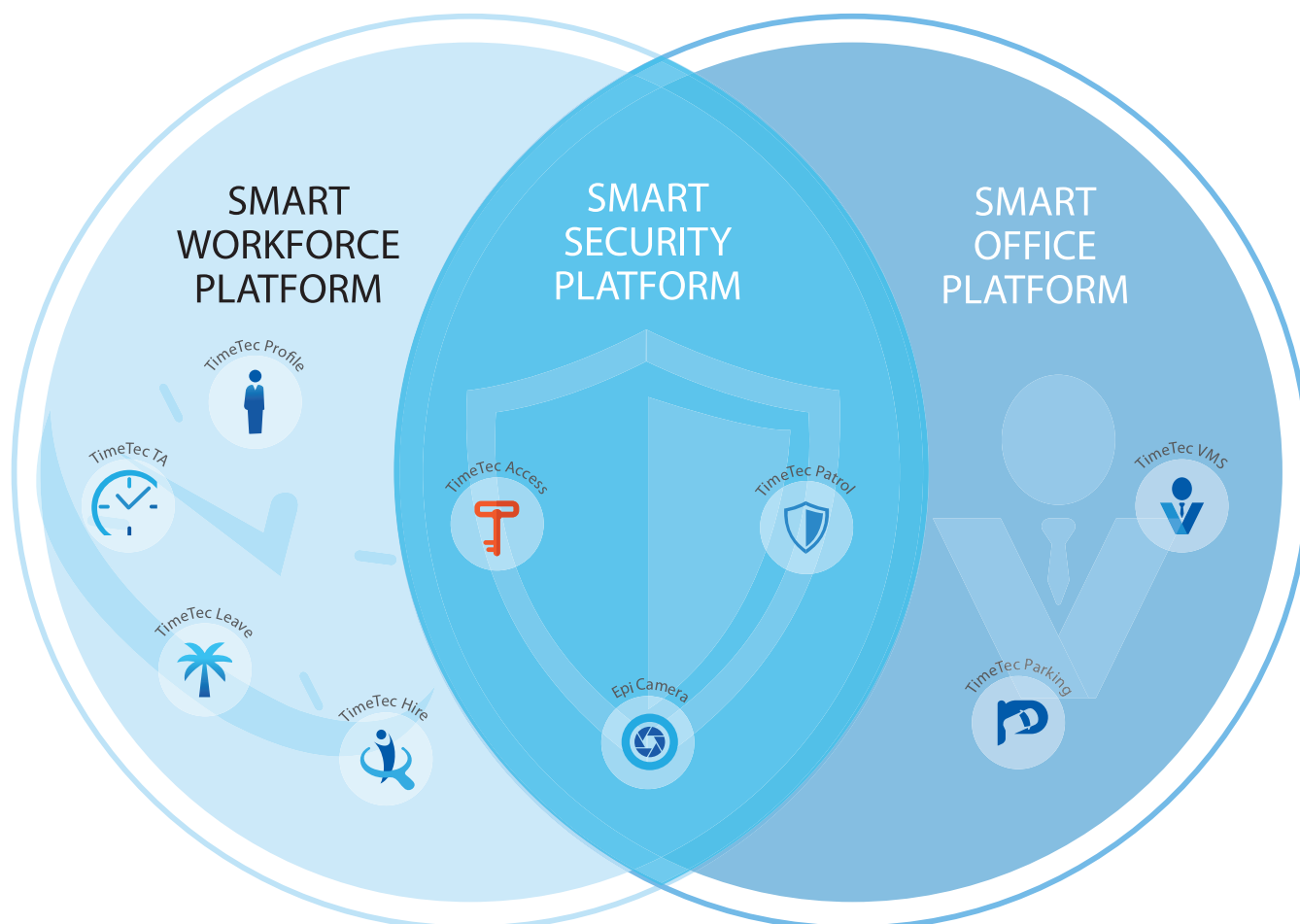




# OVERVIEW

## TIMETEC BUSINESS WORKFORCE ECOSYSTEM

TimeTec presents three major cloud-based platforms to offer businesses with smart workforce management, smart security management, and smart office management for better handling of the people and the assets.



**TimeTec Smart Workforce Platform** consists of four practical systems to manage human resources from hiring to managing employee profile to administering attendance & scheduling as well as handling employee leaves through TimeTec Hire, TimeTec Profile, TimeTec TA and TimeTec Leave respectively. The system in this platform can work independently or integrated to serve diverse industries effectively.

**TimeTec Security Platform** ensures that office premises' security is taken care of inside and out, and around the clock with TimeTec various security solutions. TimeTec Access, a mobile-based access control system secures every access point, TimeTec Patrol, real-time guard tour monitoring system ascertains the guards quality while Epicamera, a cloud surveillance system helps to look after premises more effectively.

**TimeTec Smart Office Platform** offers two revolutionary solutions for office management, which are TimeTec VMS and TimeTec Parking. TimeTec VMS is a cloud-based visitor management system that caters to the visitors' comings and goings. Whereas, TimeTec Parking is a cloud-based multi-tenanted e-wallet enabled parking management system that takes care of the parking matters for office towers and shopping malls, all under one roof.



## TIMETEC SMART WORKFORCE PLATFORM

TimeTec Smart Workforce Platform has four central systems that can work as an independent system or can be integrated to form a wholesome workforce management system, suitable for any companies, large or small, tech-savvy or not.



**EMPLOYEE PROFILE**  
MANAGEMENT



**TIME, ATTENDANCE  
& SCHEDULING**  
MANAGEMENT



**EMPLOYEE LEAVE**  
MANAGEMENT



**RECRUITMENT**  
MANAGEMENT



# TIMETEC SMART WORKFORCE PLATFORM



## EMPLOYEE PROFILE MANAGEMENT

TimeTec Profile - Cloud-based Employee Profile for Smart Office

Centralize all of your employees' profiles in one cloud-based tool: TimeTec Profile applies the data across all other TimeTec systems, namely **TimeTec TA, TimeTec Leave, TimeTec Hire, TimeTec Patrol, TimeTec Access** and **TimeTec VMS**.

### FEATURES

- ADD FIELDS TO YOUR EMPLOYEE PROFILE
- SAFEGUARD YOUR COMPANY'S CONFIDENTIAL INFORMATION
- BUILD YOUR ORGANIZATION STRUCTURE
- MANAGE ORGANIZATIONAL HIERARCHY
- MANAGE OTHER SOLUTIONS LICENSES



## BENEFITS OF TIMETEC PROFILE



### BOSSES/DIRECTORS

- Proper documentation of all employees' data online
- Accessible remotely anywhere and anytime



### HR

- Easier onboarding process
- Flexible to customize fields
- Eco friendly and less paperwork
- Manage users & organization chart



### ACCOUNT & FINANCE

- Define salary and work rates
- Update the latest amount securely



### EMPLOYEES

- Convenient personal data access
- Can perform self-service data
- Keep data secure, transparent and up-to-date



Personal Information  
Edit Profile Field

Profile- General  
Information

## CAN A COMPANY HAVE AN OPTION TO USE ONLY TIMETEC PROFILE?

### SOLUTION

Yes. A company can choose to use only TimeTec Profile without having to use any other TimeTec solutions. TimeTec Profile alone is chargeable at a minimal rate, but if used with any of the other TimeTec systems, the system comes as a default, and it is free of charge.





# TIMETEC SMART WORKFORCE PLATFORM

www.timetecta.com



## TIME, ATTENDANCE & SCHEDULING MANAGEMENT

TimeTec TA - Time & Attendance Solution for Modern Workforce

Effectively centralize and monitor multiple sites and mobile workforce attendance data, scheduling most sophisticated roster to meet all kinds of industries, from SME to large MNC organizations.

### FEATURES

#### ● VARIETY OF CLOCKING METHODS

Biometrics (face, fingerprint), RFID card, smartphones (Wifi, Beacon, NFC Tag, GPS with Geofencing, QR Code), Web Clocking.

#### ● REAL-TIME DATA

#### ● MULTI LOCATIONS

#### ● 41 REPORTS AND COUNTING

#### ● ROSTER AND SCHEDULING MADE EASY (Up to 999 schedules)

#### ● OVERTIME APPLICATION AND APPROVAL

#### ● LIVE ATTENDANCE MONITORING

#### ● TIMETEC TA APP FOR ANDROID & iOS



# THE MANY BENEFITS OF TIMETEC TA



## MANAGEMENT

- Pie chart overview of organization's punctuality with filtering function
- Real-time monitoring tardiness of all or selected employees along with notification
- Access to data remotely via web portal or mobile App
- Monitor employees' whereabouts
- Boss mode: Virtual account to monitor staff attendance performance



## HOD/MANAGER

- Monitor subordinates' daily attendance
- Create and assign subordinates' shifts
- Approve overtime/edit attendance request
- Assess time management and punctuality
- Clock on behalf of subordinates
- Generate or print relevant reports
- Receive instant notification via App
- Monitor subordinates' whereabouts



## GENERAL

- Perform attendance clockings by methods decided by management
- Generate own attendance report
- Personal dashboard
- Calendar view to check on own roster
- Access to own attendance data
- Request superior to edit attendance data



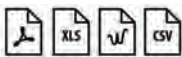
## TIMETEC TA APPLICATION FOR EFFECTIVE WORKFORCE MANAGEMENT



### AUDIT DATA & REPORTING

Attendance data is valuable to manage your workforce better.

- 41 pre-configured reports available
- The layout is configurable and customizable.
- Multiple filters to ease report generation.
- Multiple report formats including pdf, xls, doc and csv.



### MANAGE USER AND ORGANIZATIONAL CHART

Add users & assign them into respective departments.



### SCHEDULING MADE EASY

Three simple steps to schedule your company work timetable accurately and effectively. Default schedules are available upon signup.

- Create customized schedules and define rules for each.
- Add roster to accommodate schedule in calendar.
- Assign users to respective rosters.

### REQUEST AND APPROVAL



Comprehensive approval rules and flows for different scenarios.

- Request overtime in advance or after.
- Request amendment of attendance data.
- Request for outstation or offsite work clocking.

### ATTENDANCE

Record daily work and overtime accurately based on rules and settings. Process the clocking data and match them to relevant clocking columns accurately.

- Attendance Sheet reflects the real-time data.
- Manager can edit missing or inaccurate clocking data.
- Customized table formats are available to export data for third party systems, i.e., xls, csv, txt.



### CLOCKING OPTIONS

#### Three clocking options:

Mobile App, Web, and Biometrics Terminal.  
Data from all options sync to the server in real-time.

- GPS location is available on mobile App.
- Unique mobile ID to avoid "buddy-punching."
- Biometrics offer genuine clocking data.



Web



Mobile



Biometric



# MOBILE & APP CLOCKING

Clock time attendance via mobile through five simple ways: **Beacon, NFC, Wifi, QR Code** and **GPS**. It's simple, it's live and it's flexible, a great tool for modern companies to tackle staff's mobility

SIMPLE

- **MONITORING FEATURE**  
Useful as time training tool

- **REPORTS**  
Generate on the spot pdf reports of choice

- **INTEGRATE WITH LEAVE & ACCESS**  
For a more complete workforce solution

- **GPS/NFC/ BEACON / WIFI/QR CODE SUPERVISOR CLOCK IN**  
Clock from your smartphone hassle free

- **VIEW YOUR WORK ROSTER + YOUR TEAM'S**  
Because transparency is the best policy

- **DASHBOARD TO CHART ATTENDANCE PERFORMANCE**  
One click and you are in the know

- **OVERTIME/EDIT ATTENDANCE/  
OUT OF OFFICE REQUEST & APPROVAL**  
Easy, effective, traceable

LIVE

FLEXIBLE

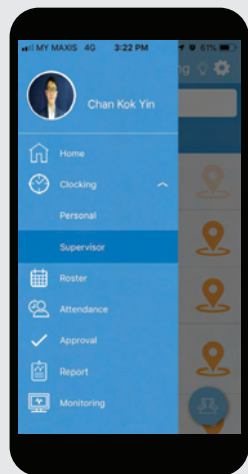


**Admin: Scheduling**

**User Information**

**Mobile:**

- Clocking • Attendance
- Roster • Request & Approval



**WHEN STAFF OWN NO SMARTPHONE OR CANNOT USE SMARTPHONES AT WORK**

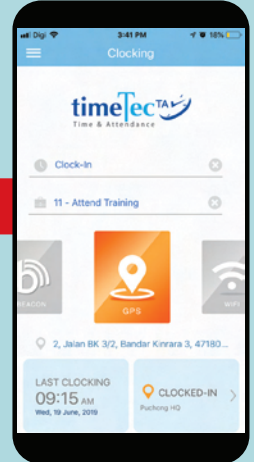
### SOLUTION

TimeTec TA Mobile App provides a feature for a supervisor and a manager to clock on behalf of their employees. When the supervisor clocks for the employees, the system captures the times and GPS locations. Additionally, the supervisor can take photos of the employees as an attachment in the data to be visual proof of their attendance.

**FOR MOBILE STAFF THAT ARE ALWAYS AWAY FROM THE OFFICE**

### SOLUTION

The office can track the whereabouts of the mobile team, such as sales and services staff through the TimeTec TA App's GPS geofence enabled location. If more information is required, the office can request for a photo of the location/building as visual proof along with their clocking data when they are on-site for the managers to verify.





# BIOMETRICS CLOCKING

On-premise users can do clocking by using FingerTec biometrics devices through four simple methods: **fingerprint, face, cards (RFID, MiFare), or password**. All data from the devices are pushable to TimeTec TA and viewed through TimeTec App.

AUTHENTIC

LIVE

SIMPLE

- **SMALL INVESTMENT** for all the benefits it brings to an organization
- **OVERALL OVERVIEW** is available to view the real situation
- **HIGH TECH IMAGE** with the use of fingerprint/face technology for attendance
- **ACCURATE REPORTS** obtainable at anytime, every time and accurately
- **REDUCE WORKLOAD** and be able to use valuable staff for more valuable tasks than to calculate attendance manually
- **ACCURACY TO THE TEE** because automation makes every data accurate and error-free
- **EASY TO USE** as it only takes a second to verify a finger or a face for attendance records
- **PAPERLESS** and environmentally friendly for every process is done electronically
- **ROBUST** and built to last, devices can stand frequent usage for many years
- **VERSATILE** and compatible with cloud solutions which can be integrated with payroll



Pg48-49

IF I HAVE BEEN USING A **BIOMETRICS SYSTEM** FOR ATTENDANCE, CAN I ADD OTHER OPTIONS LIKE BEACON AND NFC TAGS IN THE MIX WHEN I USE TIMETEC TA?



### SOLUTION

Definitely. TimeTec TA is a versatile solution where it caters to various working methods seamlessly. You can always migrate to TimeTec TA if your company has been using biometrics solutions on Windows. Once you are using TimeTec TA, you can add other mobile clocking options in your system. Alternatively, you can start with other clocking options and add biometrics along the way also.

TIMETEC TA CAN BE CONNECTED TO **FINGERTEC BIOMETRICS ONLY**, OR WE CAN USE OTHER BRANDS AS WELL?



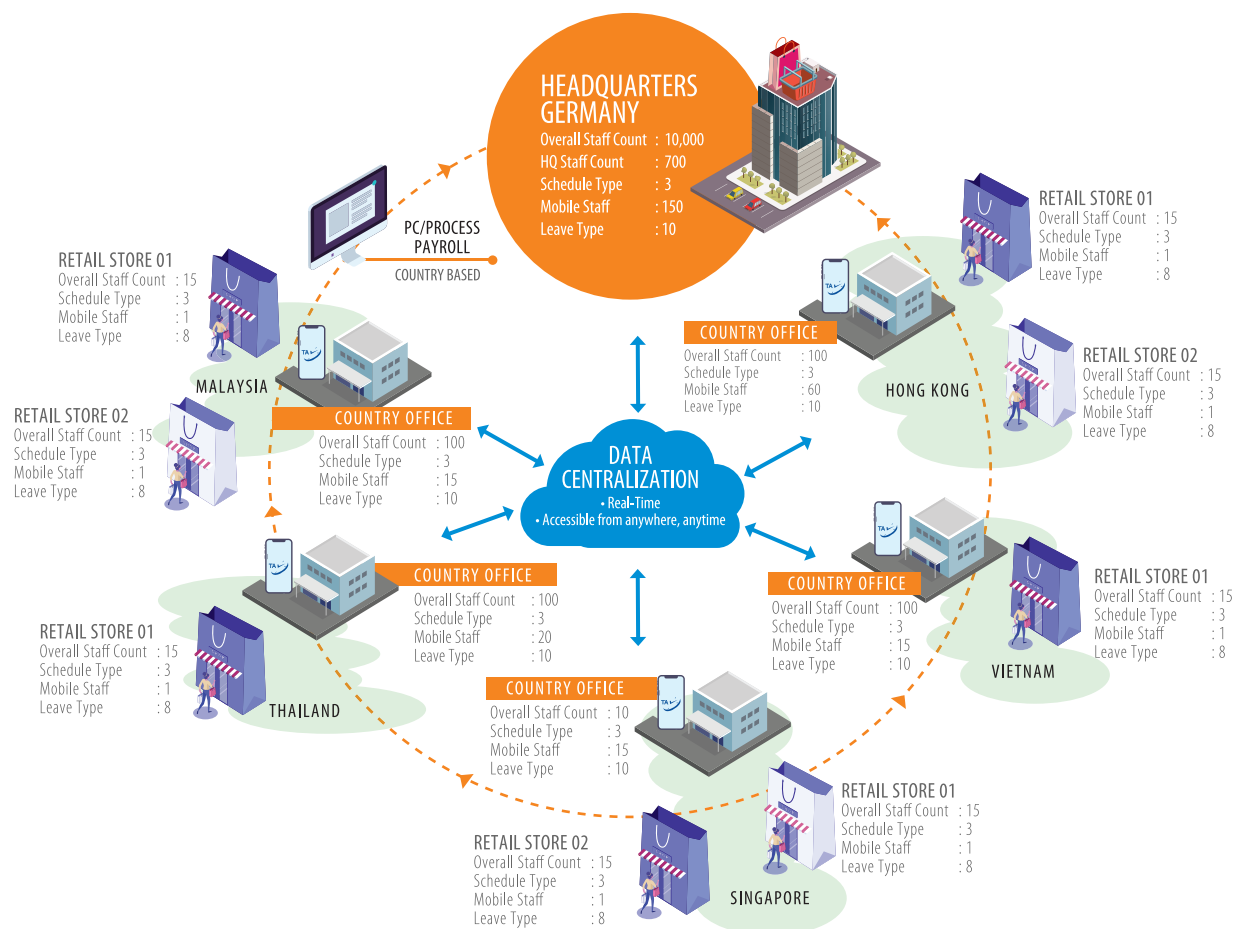
### SOLUTION

TimeTec TA opens its connection to third-party attendance devices, such as ZKTeco models Face800 and iClock360 for data collection and attendance management. However, you need to complete some steps before you can establish the connection between TimeTec TA and the third party devices. To find out the compatibility of your ZKTeco terminals to TimeTec TA, kindly forward the your email to TimeTec 24/7 customer support at [support@fingertec.com](mailto:support@fingertec.com)

## OVERVIEW OF TIMETEC TA APPLICATION ON MAJOR INDUSTRIES

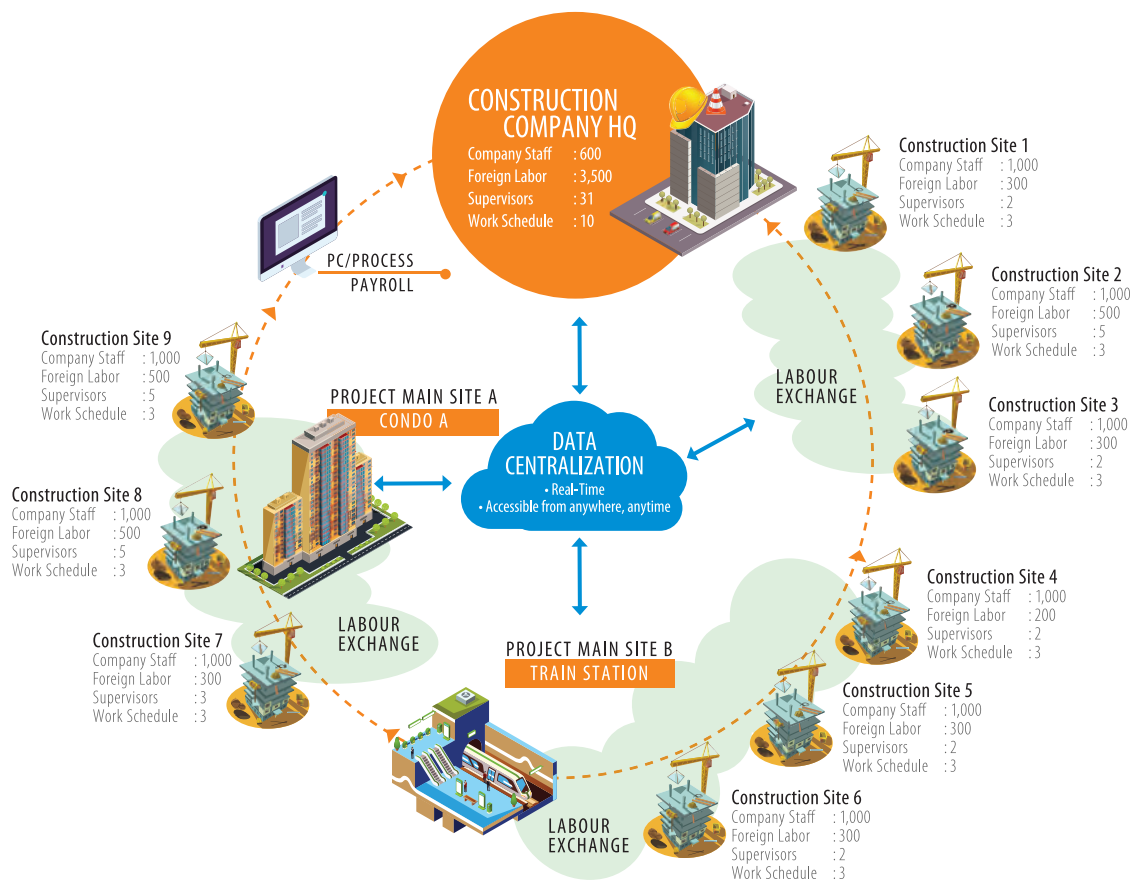
TimeTec TA system is flexible and versatile.  
**Applicable to most industries.**



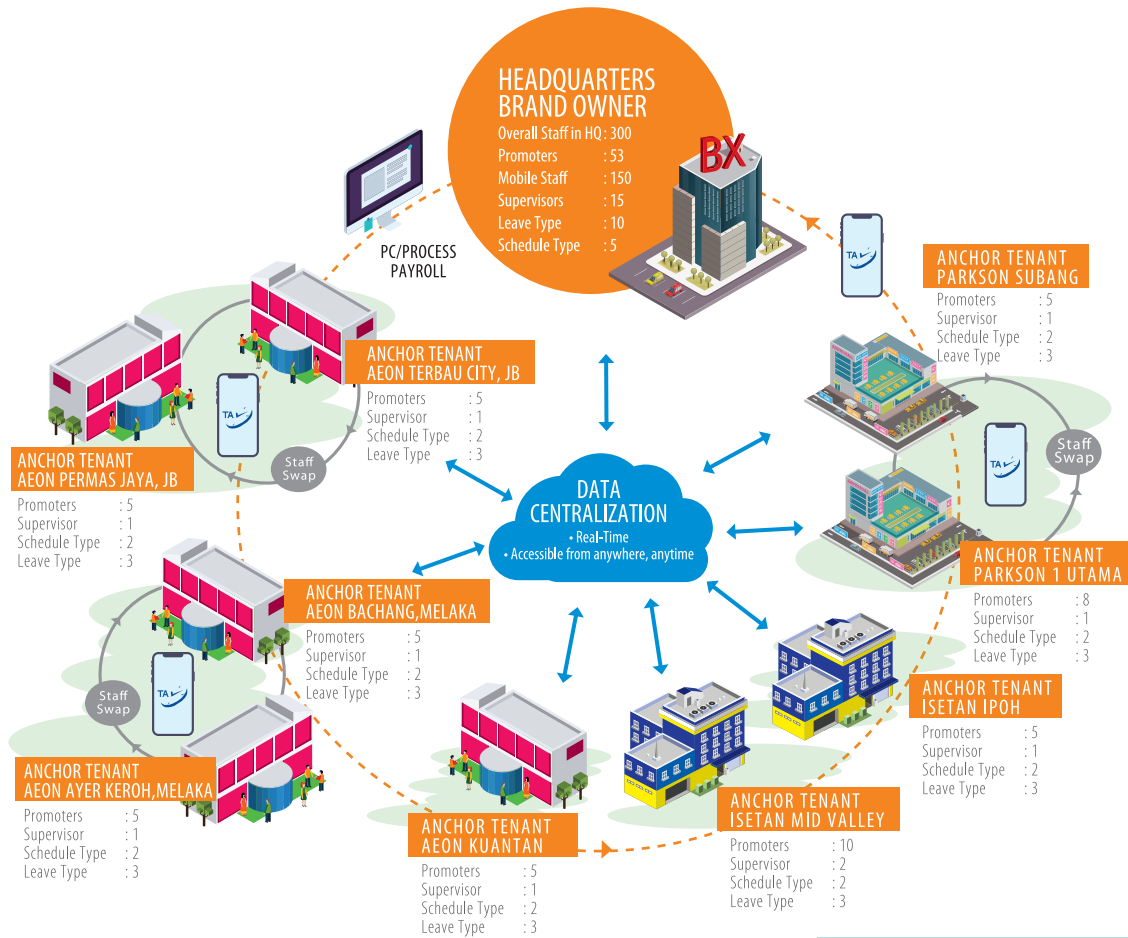


RETAIL BUSINESS

CONSTRUCTION COMPANY

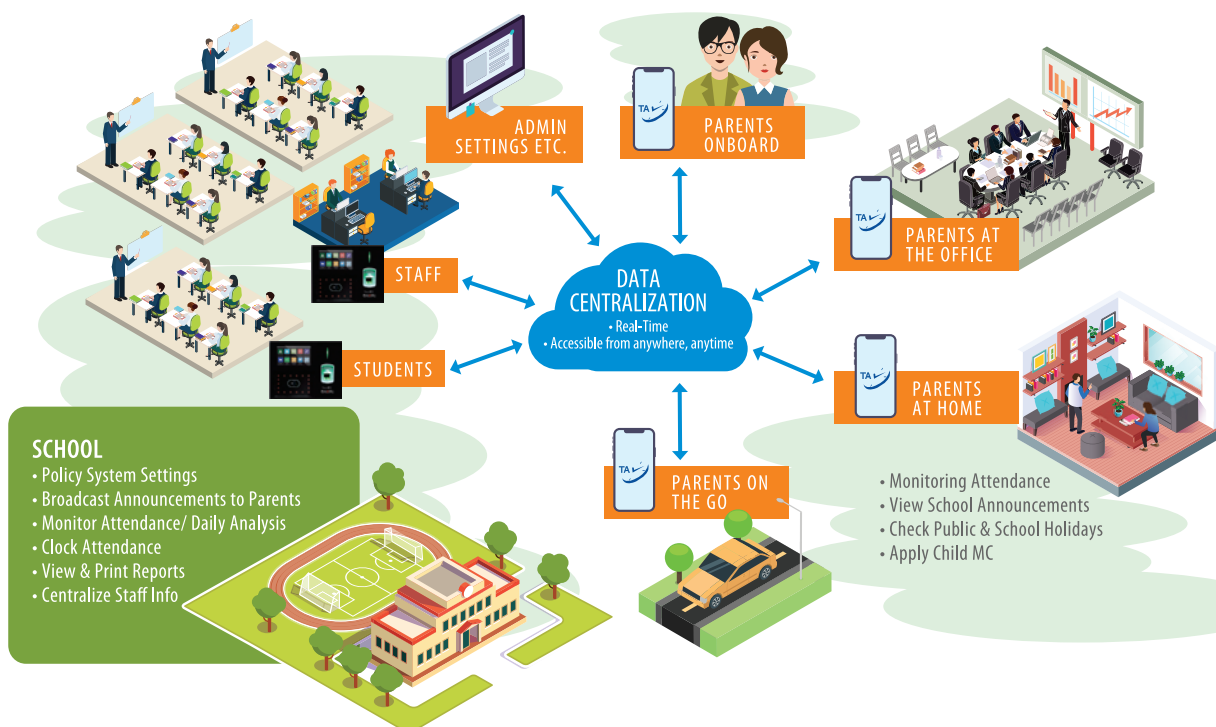






## CONCESSION STORE BUSINESS

## IMPLEMENTATION IN SCHOOL





# TIMETEC SMART WORKFORCE PLATFORM



## EMPLOYEE LEAVE MANAGEMENT

TimeTec Leave - Management System for Modern Workforce

For employers to manage employees leave settings, leave policies, leave accruals, applications, approvals, and balance all in one centralized, automated solution.

### FEATURES

- MANAGE LEAVE POLICIES, RULES & RESTRICTIONS
- MANAGE SERVICE ACCRUALS
- AUTOMATE LEAVE APPROVAL/APPLICATION
- CHECK LEAVE BALANCE
- LABOR COMPLIANCE
- ASSIGN ALLOWANCES
- CRUNCH TIME
- MANAGE LEAVE PLAN
- ACCESSIBLE DATA
- REPORTING



# TIMETEC LEAVE BENEFITED EVERY PERSONNEL



## MANAGEMENT

- Managing compliance
- Calendar for Quick View
- Block crunch time
- Multiple approvers



## HOD/MANAGER

- Instant leave approval
- Monitor employees' leave updates
- Block crunch time
- Manage own department leave application



## HR MANAGERS

- Easy settings of leave policies
- Automatic accruals
- Accurate leave entitlement
- Instant leave balance calculation
- Produce reports



## EMPLOYEES

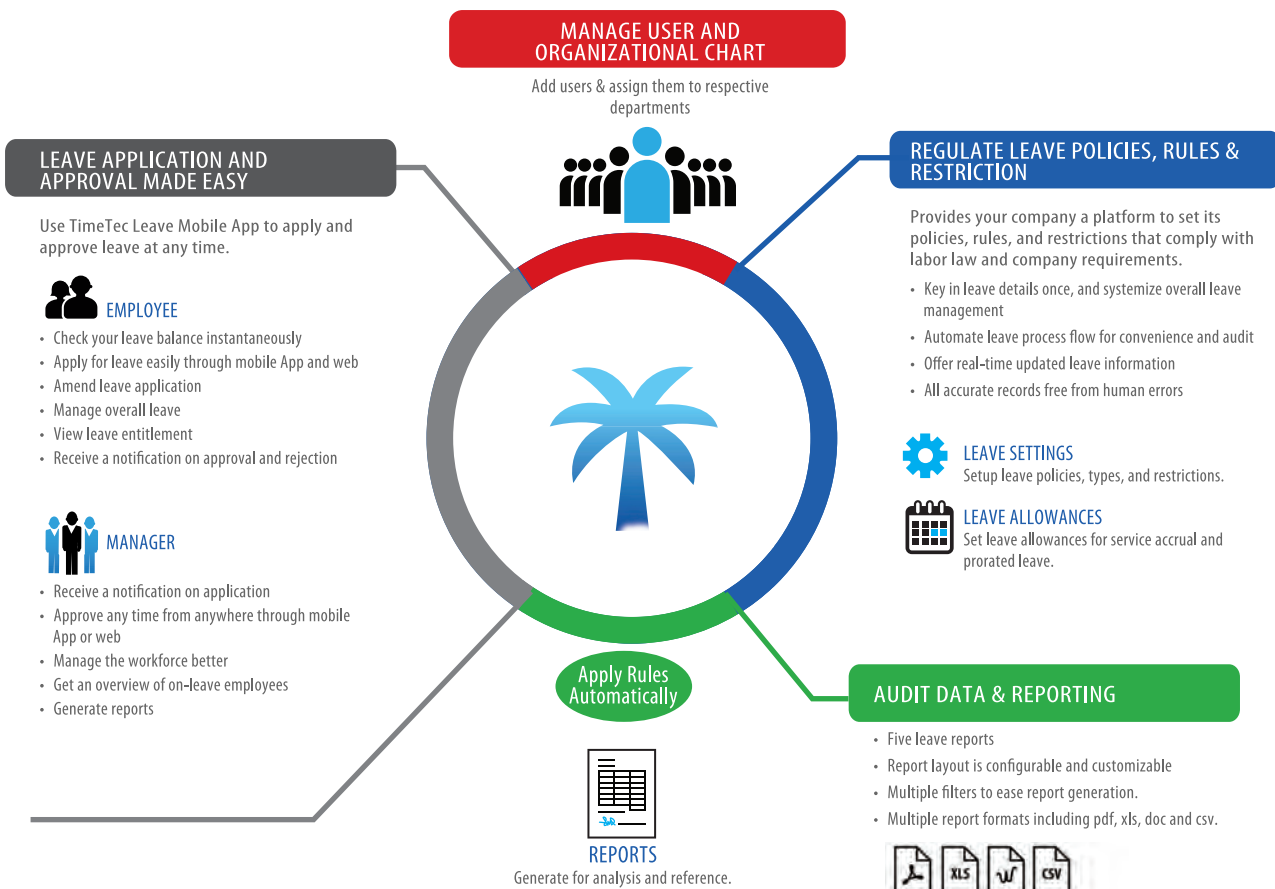
- View personal leave data
- Apply leave
- Check leave balance
- Replacement Credit
- Notification



## BRANCH MANAGERS

- Manage leave of branch staff
- Get an overview of the staff's leave and leave pattern
- Approve leave applications via App

## TIMETEC LEAVE APPLICATION FOR WORKFORCE MANAGEMENT





HOMECOMPANYUSERHOLIDAYLEAVE SETTINGSAPPROVALREPLACEMENT CREDITREPORTSUPPORT

Leave Type

Every organization has its own set of leaves that employees are entitled to. Create leave types such as Annual Leave, Sick Leave, Maternity Leave, Paternity Leave, Bereavement, etc in this set. By default, any absence on Workdays will be defined as ABSENT.

Absent on working day is: **ABSENT**

NAME	DESCRIPTION	TYPE	DEDUCT FROM	ENABLE
Birthday Leave		Deductible		<input checked="" type="checkbox"/>
Business		Non-Deductible		<input checked="" type="checkbox"/>
Childcare Leave	PRESET LEAVE: Childcare leave is a time off for employees to take care of their sick children aged below 12 years old. *Child age may vary by country/company	Deductible		<input checked="" type="checkbox"/>
Compassionate	PRESET LEAVE: Compassionate leave is time off work granted to employees as a result of personal circumstances such as the death of a family member or a close relative.	Deductible		<input checked="" type="checkbox"/>
Compassionate (parent In-Law, Grandparent, Siblings)		Non-Deductible		<input checked="" type="checkbox"/>

Terms of Use | Privacy Policy | Guarantee | SLA |

New Features | Blog | More

- Leave Policy
- Leave Type

HOMECOMPANYUSERHOLIDAYLEAVE SETTINGSAPPROVALREPLACEMENT CREDITREPORTSUPPORT

Leave Policy

Leave Policies are templates containing a group of leave types with its individual settings. You can create multiple leave policies and assign users to them. For example, if by default your company allocates 15 days of annual leave and 14 days of medical leave to all employees, you can create a Leave Policy with these settings and assign them to all relevant employees. Assign newly hired employee to this leave policy to simplify the leave allocation process.

Note: Please note that once transferred to a user, modifying a leave policy will not directly modify the user's leave type settings. It's crucial that you click the "Apply Policy" button to apply the edited policy to the assigned users.

Leave Policy Name	Active	Edit
0 - 2 years	<input checked="" type="checkbox"/>	
0-2 years	<input checked="" type="checkbox"/>	
2 - 5 years	<input checked="" type="checkbox"/>	
5-10 Years	<input checked="" type="checkbox"/>	
6 Month Confirmation	<input checked="" type="checkbox"/>	
General Policy	<input checked="" type="checkbox"/>	
General template	<input checked="" type="checkbox"/>	

Leave Overview

timeTec LEAVE Solution

09:59:20 AM Thursday, 22 August 2019  
Wong Kam Yin |

TimeTec Computing Sdn. Bhd.

HOMEPROFILELEAVE APPLICATIONLEAVE APPROVALREPLACEMENT CREDITREPORTSUPPORT

LEAVE OVERVIEW

2019 | August | All Users | All Types

Month | Year | AUGUST 2019 | Today

Sun	Mon	Tue	Wed	Thu	Fri	Sat
				1 ● Annual ● Maternity ● Sick ● Work From Home	2 ● Annual ● Maternity ● Sick ● Work From Home	3 ● Maternity
4 ● Maternity	5 ● Annual ● Maternity ● Sick ● Unpaid	6 ● Annual ● Maternity ● Maternity Leave ● Sick	7 ● Annual ● Maternity ● Replacement Leave ● Sick	8 ● Annual ● Maternity ● Maternity Leave ● Sick	9 ● Annual ● Maternity ● Replacement Leave ● Sick	10 ● Maternity
11 ● Maternity	12 ● Maternity ● Out of Office	13 ● Annual ● Maternity ● Maternity ● Out of Office	14 ● Annual ● Maternity ● Maternity ● Out of Office	15 ● Annual ● Maternity ● Maternity ● Out of Office	16 ● Annual ● Maternity ● Out of Office ● Replacement Leave	17 ● Maternity ● Out of Office
18 ● Maternity	19 ● Annual	20 ● Annual	21 ● Annual	22 ● Annual	23 ● Annual	24 ● Maternity

New Features | Blog | Message | Glossary | Language

New Application

Leave Name

Request Type

Date

Cc (Optional)

Add Reason

Annual

Pending

REQUEST DETAILS

Annual

Multiple Day 08/21/2017, 08/22/2017, 08/23/2017

Vacation

APPROVERS (SEQUENTIAL)

Henry Pang Kok Loong

CANCEL APPLICATION

Notification

Application: Your Leave Application has been approved.

Today Thu 3:08 PM

Reminder: Nattalina on Annual on 08/18/2017

Today Thu 12:00 AM

Reminder: Chu Fei L Annual on 08/18/2017

Today Thu 12:00 AM

Reminder: Amalina Jamaluddin will be o 08/17/2017, 08/18/2017

Yesterday Wed 12:03 AM

Reminder: Chu Fei L Annual on 08/17/2017

Yesterday Wed 12:03 AM

Reminder: Norfiday

Annual

Approved

REQUEST DETAILS

Annual

Multiple Day 06/05/2017, 06/06/2017, 06/07/2017, 06/08/2017, 06/09/2017

Vacation

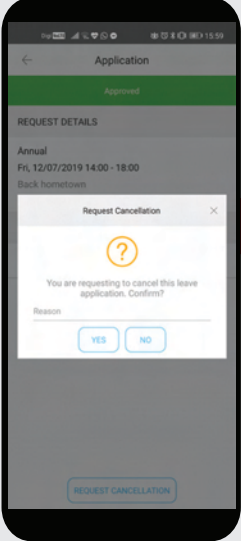
APPROVED

Henry Pang Kok Loong

08/13/2017 1:08 PM

REQUEST CANCELLATION

- Mobile:
- Application
  - Approval
  - Cancellation



### WHEN STAFF HAS **TAKEN LEAVE**, BUT CIRCUMSTANCE REQUIRES HIM/HER TO CANCEL THE LEAVE

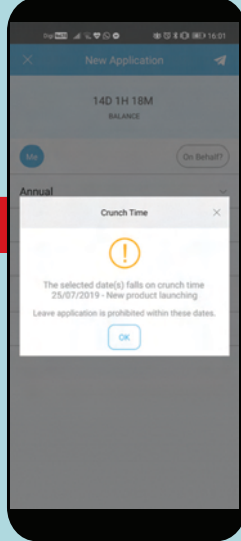
**SOLUTION**

There are cases whereby a staff needs to cancel the leave because of certain circumstances. TimeTec Leave has a feature that allows staff to cancel the leave taken and to restore the balance after the cancellation gets approved from the superior.

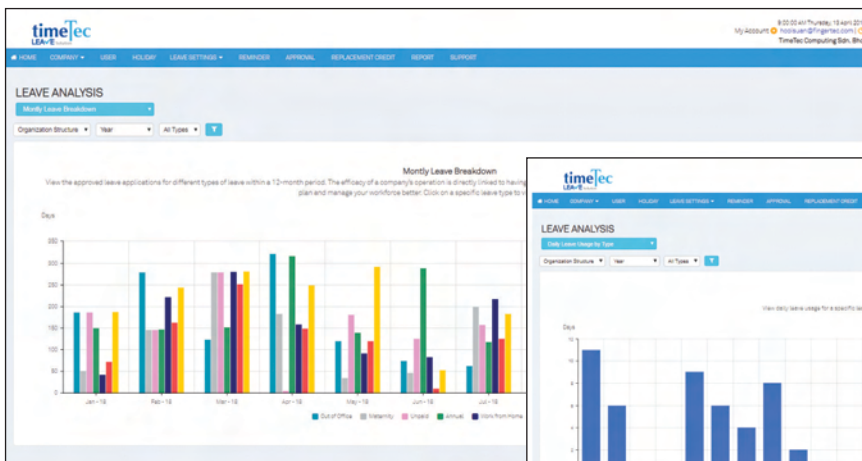
### DEALING WITH CRUNCH TIME AND FESTIVE PERIODS

**SOLUTION**

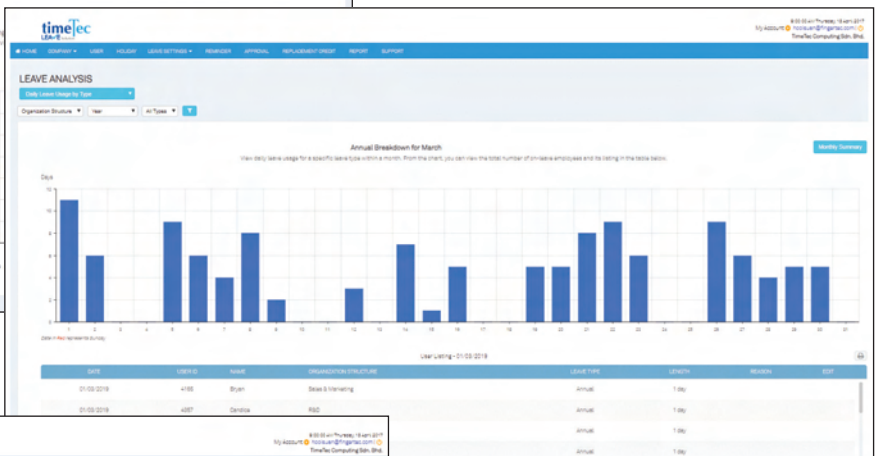
Businesses that run on specific processes are mindful when it comes to the management of employee leave because the absence of staff could impact the operation significantly. TimeTec Leave has a feature that allows a company to block leave application during crunch time as well as manage employees during festive periods effectively.



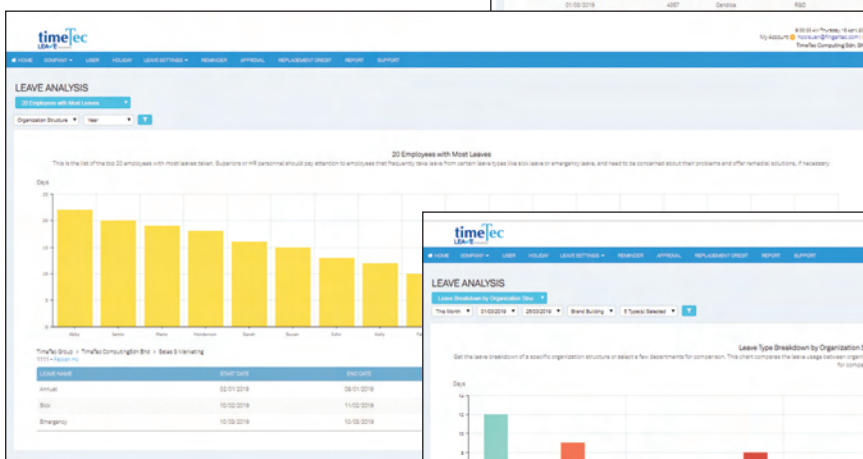
## TIMEtec LEAVE DATA ANALYTICS



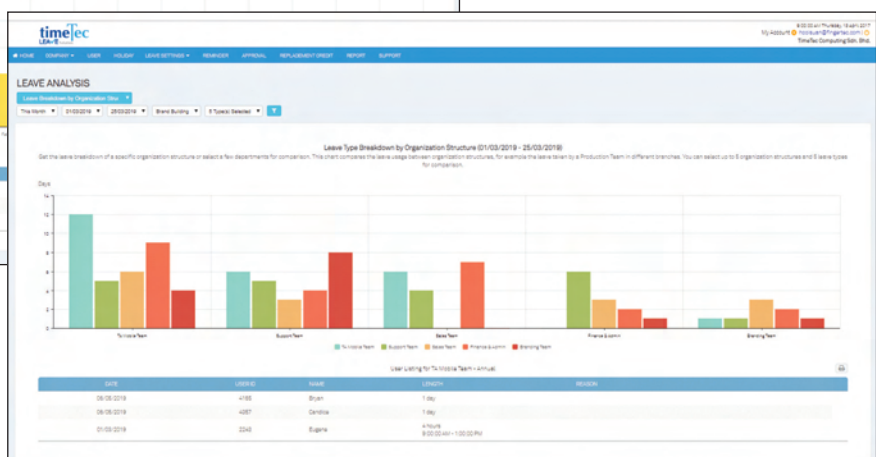
Annual Leave Breakdown



Monthly Leave Breakdown by Leave Type



20 Employees with Most Leaves Taken



Leave Type Breakdown by Organization



# TIMETEC SMART WORKFORCE PLATFORM

www.timetechire.com



## RECRUITMENT MANAGEMENT

TimeTec Hire - Cloud Recruitment Solution for Modern Workforce

Assists companies starting from pre-hiring process to job postings, to sharing of vacancy, to flow of the hiring process, up to onboarding process of recruits with ease. TimeTec Hire comes with an ATS (Applicant Tracking System) module for a company to collect and sort piles of resumes automatically. Consequently, this process will find the ones that match the requirements of the vacancies in the shortest amount of time.

### FEATURES

- IMPROVE HIRING PROCESS
- CREATE BETTER TEAM
- CREATE E-APPLICATION FORM
- SCHEDULE TO AUTO-PUBLISH
- SHARING OF VACANCY LINKS
- DROP RESUME
- EMBED TIMETEC HIRE IN COMPANY'S WEBSITE
- AUTO REMINDER MAILERS
- RECORDS AVAILABLE ON SERVER
- ONBOARDING PROCESS IS EASY

# THE BENEFITS OF TIMETEC HIRE



## BOSSSES/DIRECTORS

- Speed up process
- Professional decent screening process
- Convenient and remote access to data
- Easily keep track of job openings



## HR

- Keep a centralized system
- Speed up and automate the filtering process
- Hiring assessment tools
- Efficient interview appointments scheduling
- Simplified hiring process
- Instant assimilation



## APPLICANTS

- Better response pace
- Fast and efficient system
- A well-written scorecard
- Get an interview schedule
- The confirmation for job & package offer
- Records are instantly saved & transferred to the company profile



## INTERVIEWER/MANAGER

- Receive proper and up-to-date progress information
- Centralized server for interviewer/manager to update progress
- Schedule interview conveniently
- Get the confirmation right away



## ACCOUNT AND FINANCE

- Access the negotiating offers
- Obtain candidate salary data

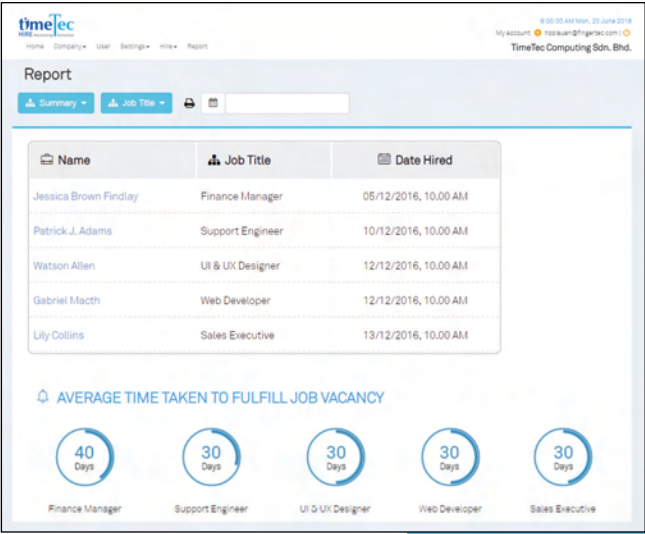
## TIMETEC HIRE APPLICATION FOR WORKFORCE MANAGEMENT



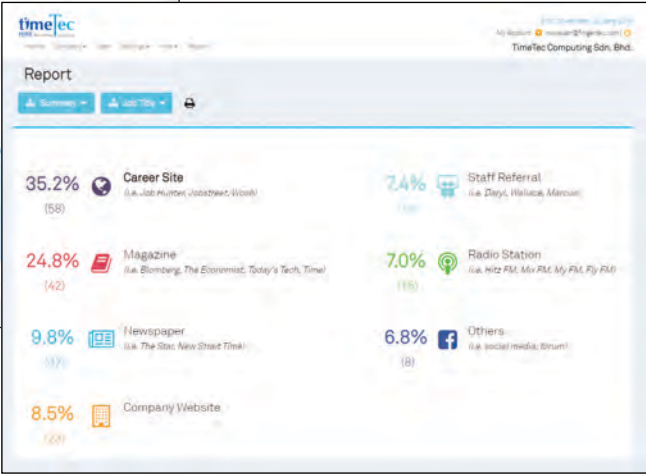




Job Summary



Hired report summary



Source report summary

# WHAT'S THE DIFFERENCE BETWEEN TIMETEC HIRE AND OTHER RECRUITMENT PLATFORMS LIKE JOBSTREET AND JOBSDB?

## SOLUTION

TimeTec Hire is your company's own recruitment system for your employees to handle the recruitment process from the start until the onboarding process. On the other hand, the recruitment platforms like Jobstreet and JobsDB, are providing exposure to the job vacancies you published with them. They are also offering a service to host those applicants for your consideration. However, with recruitment platforms, your hiring team will still have to carry out the rest of the processes. TimeTec Hire offers a consolidation of all these processes into one systemized solution so you can take charge of your hiring better and more efficiently.



# BENEFITS OF TIMETEC HIRE FOR MY ORGANIZATION

## SOLUTION

Companies are often struggled to find the matching candidates to the vacancies posted because the whole process of sifting through the many resumes is tedious and time-consuming. To improve this, the design of TimeTec Hire comes complete with Applicant Tracking System that process the requirements and qualifications against the candidates resumes automatically to generate the matching percentage accordingly. Hence, the hiring team needs to focus on shortlisted candidates rather than spending much time choosing from the piles of resumes. On top, the hiring team can prepare tests, questionnaires, and interview scorecards to make sure that the company will get the best applicants out of the talents who applied for the position. In the end, the recommended candidates for hire have proven that they passed all the requirements set by the company. Hence, the onboarding process can start right away with the available data. In addition to that, TimeTec Hire can integrate with TimeTec other workforce solutions for better resource management.





## TIMETEC SMART SECURITY PLATFORM



**ACCESS CONTROL  
MANAGEMENT**



**PATROLLING  
MANAGEMENT**



**CLOUD SURVEILLANCE  
SOLUTION**

Increase your business premises' security through cloud-based technology with three central systems which can work independently or integrated. TimeTec Access is utilizing IoT and mobile App to provide better access control to your establishment. TimeTec Patrol is a tool to keep track of the quality of your security guards. And, TimeTec Cloud Surveillance System, Epicamera as the "wary eyes" to look after your premises.



# TIMETEC SMART SECURITY PLATFORM

www.timetecaccess.com



## ACCESS CONTROL MANAGEMENT

TimeTec Access - The Cloud Access Control Solution for Smart Office

By introducing leaner but higher performance IoT hardware as a new credential and tapping on the computing power of a smartphone, TimeTec Access manages to lower the investment, implementation, and maintenance costs. It also provides real-time remote control and better interaction between all access points. Consequently, TimeTec Access can improve security, flexibility, and connectivity.

### FEATURES

- USER MANAGEMENT
- DOOR & ACCESS MANAGEMENT
- ASSIGN ACCESS RIGHTS
- UNLOCK DOORS VIA MOBILE APP
- VIEW ACCESS RECORDS
- UPDATE & ANALYSIS
- REPORTING
- FACE RECOGNITION BY USING FACE MASTER APP



# THE BENEFITS OF TIMETEC ACCESS



## BOSSSES/DIRECTORS

- Establish better security • Set time zones and accessible hours • Restricted access
- Record all access activities • Real-time data • Reduced cost



## MANAGERS

- Entry/exit movements • Generate various reports
- Anti-passback available • Reduce workload
- Create temporary pass • Transfer of access pass



## EMPLOYEES

- No risk of losing access card • Entry and exit logs as attendance



## BUILDING MANAGERS

- Monitor headcount in premises • Monitor exit record
- Anti-passback available • Easy removal of access credential • Set time zones



## HR DEPARTMENT

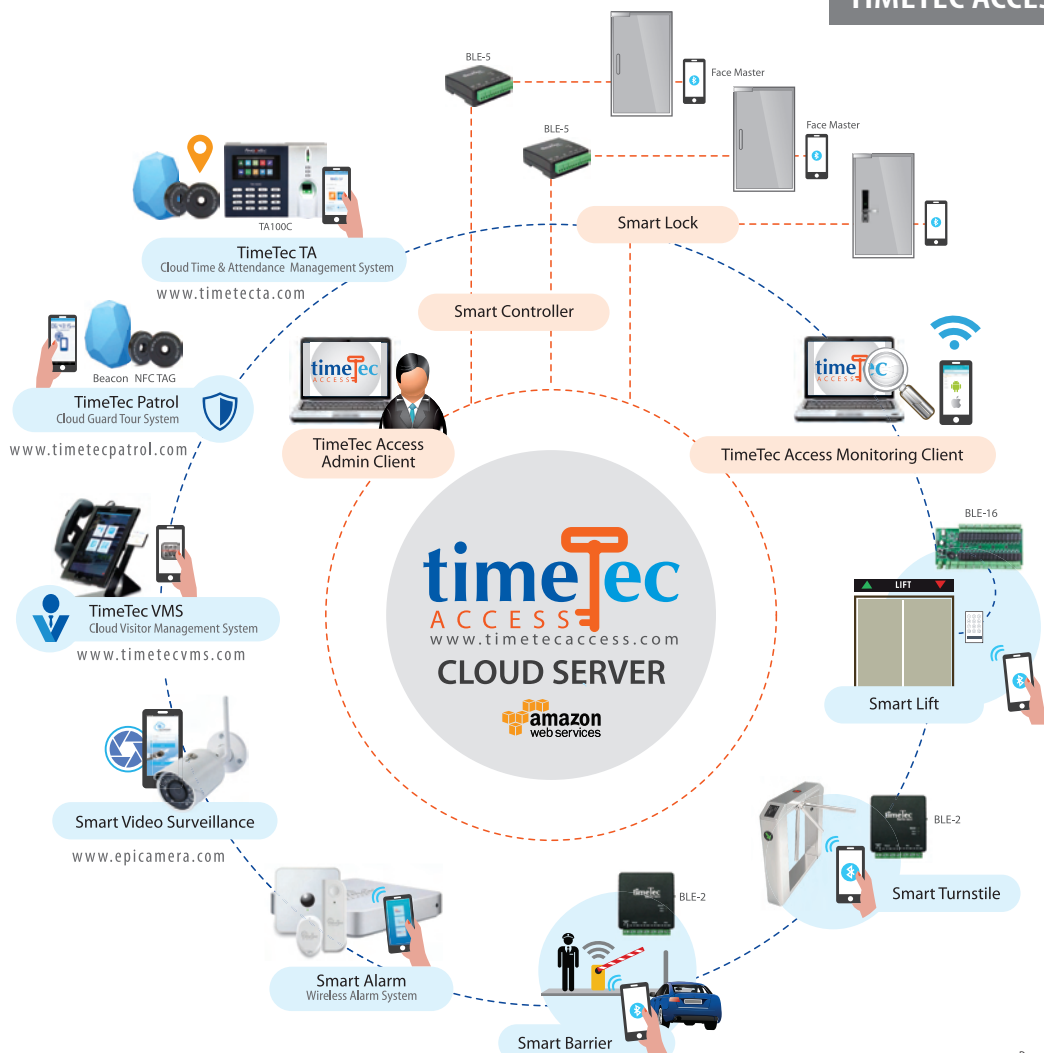
- Easy user management • Create a temporary pass
- Process Entry and exit logs as attendance • Straightforward grouping of access points



## IT EXECUTIVE

- Updates are free • No server installation required • Get immediate notification

## IoT INTEGRATED TIMETEC ACCESS ECOSYSTEM





timeTec ACCESS

10:06:50 Thursday, 22 Aug 2019

Wendi Zeiler | IMB Sdn Bhd

HOME

COMPANY

USER

ACCESS POINT

ACCESS

MONITORING

REPORT

SUPPORT

< VIEW USER

Buck Smathers

HR

Administrative Assistant

GENERAL INFORMATION

NAME

Buck Smathers

EMPLOYEE ID

3052

ALIAS

-

GENDER

Male

DATE OF BIRTH

13/05/1988

NATIONALITY

Greece

TIME ZONE

-

DST

No

RACE

-

RELIGION

-

Add System Role

Copy Access Rights from

Master

Role Name

Role Description

Organization Structure

Full Division

Partial Division

Reset

Organization Structure

Full Module Right

Partial Module Right

Reset

Company

User

Schedule

Device

Attendance & Report

Library

Notification

Mobile App

Company Profile

☐ View

☐ Edit

System Settings

☐ View

☐ Edit

Organization Structure

☐ View

Submit

Cancel

timeTec ACCESS

09:36:19 AM Wednesday, 21 Mar 2018 (30-FREE Licenses for Life. Need more?)

Choo Yuan Yew |

TimeTec Computing Sdn. Bhd 6

HOME

COMPANY

USER

DOOR

ACCESS

MONITOR

REPORT

ACCESS GROUP

Create access group and setup access rules by doors and access time.  
Assign users into access groups, each user can only assigned to one access group only.

NO.

NAME

DESCRIPTION

TOTAL DOORS

TOTAL USERS

LAST UPDATE

EDIT

1

All Managers

Allow to access all floors and doors

4

20

Steven Collin, 05/19/2018 09:22 AM

2

Admin & Finance staff

Allow to access doors at L1 to L5

2

40

Steven Collin, 02/23/2018 09:04 AM

3

Engineering staff

Allow to access doors at L1 and L2

2

36

Steven Collin, 02/23/2018 09:04 AM

4

Security staff

Allow to access to floors and all doors

2

36

Steven Collin, 02/23/2018 09:04 AM

5

Factory staff

Allow to access to factory doors

2

36

Steven Collin, 02/23/2018 09:04 AM

- User Information
- Flexible Access Rights

Door & Access Management

timeTec ACCESS

9:00:00 AM Thursday, 13 April 2017

My Account | hooiuan@fingertec.com |

TimeTec Computing Sdn. Bhd.

HOME

COMPANY

USER

DEVICE

DOOR

ACCESS

REPORT

SUPPORT

Today, 18/1/2018

Puchong HQ, 3rd Floor

Access records per doors

Door Name

Access Records

Access records - HQ wooden door

User ID

Name

Time

Abnormal Door Activities per door

Door Name

Type

Time

Alex

8:15 AM

Brian

8:15 AM

Candice

8:15 AM

Eugene

8:15 AM

Francis

8:15 AM

HQ glass door

force opened

8:15 AM

HQ wooden door

left opened

8:15 AM

Factory in door

door opened

8:15 AM

Update & Analysis

timeTec ACCESS

TimeTec HQ > Ground Floor > Main Gate (3201000)

Date	Time	User ID	Name	Organisation structure
1/11/2017	09:05 am	1101	Catherine John	TimeTec Holding > TimeTec Computing > Technical Support
	09:06 am	1102	Pony Allan	TimeTec Holding > TimeTec Computing > Sales & Marketing
	12:38 pm	1101	Catherine John	TimeTec Holding > TimeTec Computing > Engineering

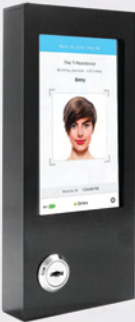
TimeTec HQ > Ground Floor > Entrance (3201001)

Date	Time	User ID	Name	Organisation structure
1/11/2017	09:08 am	1101	Catherine John	TimeTec Holding > TimeTec Computing > Technical Support
	09:09 am	1102	Pony Allan	TimeTec Holding > TimeTec Computing > Sales & Marketing
	12:40 pm	1101	Catherine John	TimeTec Holding > TimeTec Computing > Engineering

Reporting

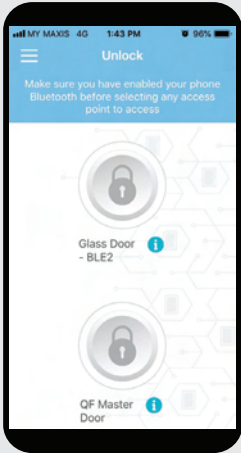
Face Master

Face Master is an Android phone turned facial recognition terminal, which designed to authenticate the person's face to justify the person access permission. The face recognition algorithm can cater up to 10,000 face templates with 1:N verification and store up to 1,000,000 transaction data, all inside the QF Master App. Face Master paired with TimeTec BLE-2 or BLE-5 or BLE-16 controller via Bluetooth to command the opening of a door, accessing of a turnstile, or to the designated floor for an elevator.



Pg47





## HOW DOES TIMETEC ACCESS WORK?

### SOLUTION

TimeTec Access is a cloud and mobile-based access control system. In TimeTec Access, an admin is responsible for managing the devices, either TimeTec BLE-2 or TimeTec BLE-5, as well as the access points, the access times and the user accounts in the cloud server. When the TimeTec Access App is in use, the user needs to login into the App to download the access permission from the cloud server. Based on the access permission given to the user, the App will list down the authorized access points for the user. When the user approaches one of the authorized access points either doors, gates, or turnstiles, he needs to trigger the App to send an unlock command to the matching access devices.

## WHEN I GIVE A TEMPORARY PASS TO AN AUTHORIZED PERSONNEL, CAN HE/SHE SHARE THIS PASS WITH OTHER PEOPLE?

### SOLUTION



No. For security reasons, the temporary pass is assigned based on the user account. For example, when you created a temporary pass for John, he is the only person who can receive the pass in his mobile App. He can use it but not to send/share with others. Moreover, even if John gives his mobile to another person to access your space, John will be held responsible because the pass is under his care.

## POWERFUL TIMETEC ACCESS APP



### MANAGE DEVICE

- A page for the admin to add/delete BLE-5 or FingerTec devices.
- Provide a listing to monitor devices' online/offline statuses.



### MANAGE DOORS

- A page for the admin to pair BLE-5 or FingerTec devices to each door.
- The admin can manage door settings, and this is only applicable to BLE-5 i.e., door opening time, door alarm timer, etc.



### MANAGE ACCESS TIME

- The admin can customize access time 24 hours a day in 30 minutes interval and seven days a week to restrict users in-out time per door.
- The admin can configure particular access time for holidays.



### MANAGE ACCESS GROUP

- The admin can manage access permission for users per door at different access times by groupings.
- When the admin wants to change a person's access permission, admin can assign the person into a different grouping.



### MANAGE TEMPORARY PASS

- When a person is permitted to access certain doors at specific dates and time, the admin can create temporary access permission for the person.
- The admin can activate the temporary pass at a specific date and time.
- The access permission becomes invalid when it expires.



### MONITORING

- Useful dashboard for a security admin to keep an eye on all entrances and exits.
- Full review of users in-out date/time at any doors in real-time.
- Full review of abnormal door activities such as door forced open, door not close, etc. in real-time.



### REPORT

- The admin can prepare a total of 8 reports for devices and door statuses, entry-exit records per person or doors from Report module.
- The admin can save the reports into digital formats, i.e., PDF and send it to the relevant person.





# TIMETEC SMART SECURITY PLATFORM

www.timetecpatrol.com



## PATROLLING MANAGEMENT

TimeTec Patrol - Efficient Guard Tour Management Solution

TimeTec Patrol is an effective cloud-based patrolling system for security companies to monitor and maintain the quality of their on-duty guards' performance. The system tracks the guards in real-time through various tasks such as patrolling activities, managing job orders, incident reports, and SOS incidents. Plus, it comes with Live Location Tracking for live updates of the guards' whereabouts at all times.

### FEATURES

- PATROL WITH NFC AND BEACON (BLE BLUETOOTH) ENABLED SMARTPHONES
- MANAGE PATROLLING ROUTES
- S.O.S PANIC BUTTON
- CHECKPOINT TOUR SYSTEM
- GUARDS CAN REPORT INCIDENTS
- GPS TRACKING
- SECURE DATA STORAGE
- LIVE LOCATION TRACKING



Pg42

# THE BENEFITS OF TIMETEC PATROL FOR GUARDS PATROLLING



## BOSSES/DIRECTORS OF SECURITY COMPANY

- Better utilisation of manpower
- Uplift the guards quality
- Centralized cloud server
- Provide automation
- Value added solution
- Efficient monitoring process



## GUARD SUPERVISORS

- Immediate notification and email
- Instant incident reports
- Instant SOS alert
- Generate reports remotely
- Customize and send updated data
- Sending of job orders



## SECURITY GUARDS

- Well documented work performance
- Keeping the guards safe
- Better communication
- Easily access to patrol schedules
- Job order reference



## END CUSTOMERS

- Monitoring made easy
- Incident reports
- Tardiness alert
- Reliable reports
- Records of emergency events
- Guards ROI



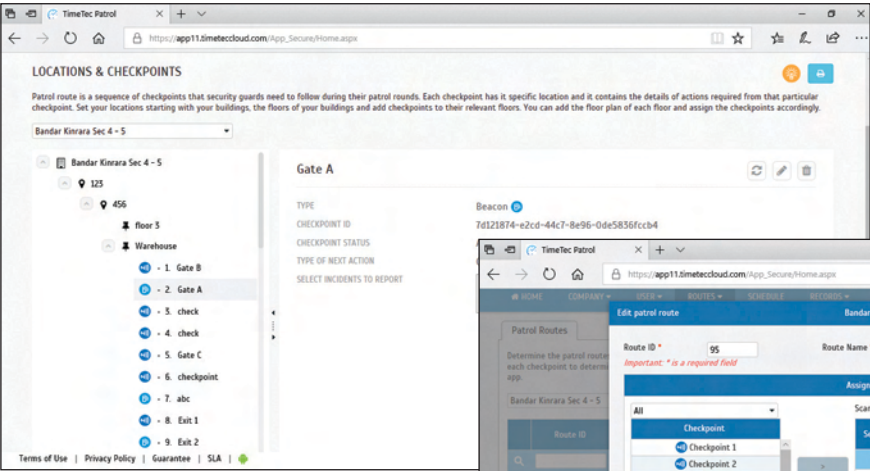
## ACCOUNT AND FINANCE ADMIN

- Better cost and budget estimation
- Fair payroll
- Time saving
- Reliable data

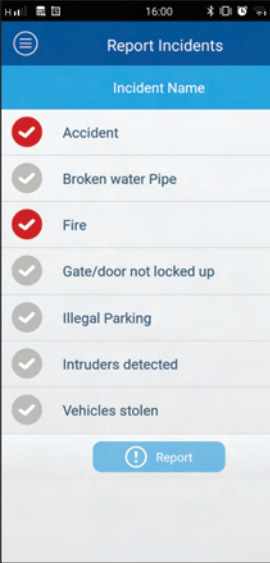
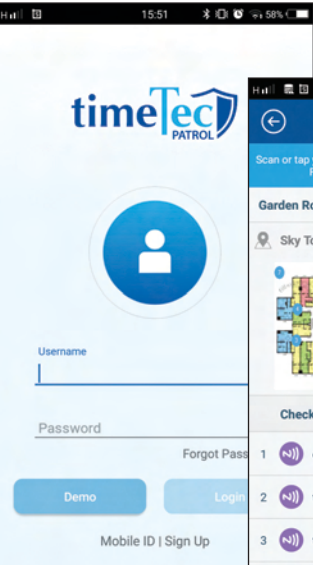
## MONITOR YOUR GUARDS IN REAL-TIME WITH TIMETEC PATROL



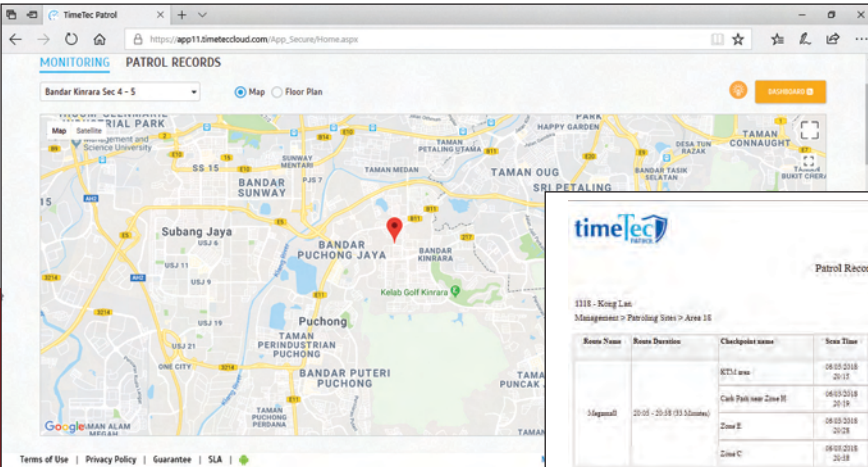





- NFC/Beacon as Checkpoints
- Routes for Patrolling



- Mobile:
- View Routes and Checkpoints
  - Report Incidents
  - Adhoc Task
  - S.O.S Panic Button



Complete Patrol Record Details



Super Security Ltd.

Patrol Record (06/03/2018 - 06/03/2018)

1116 - King Lee

Management > Patrolling Sites > Area 18

Route Name	Route Duration	Checkpoint name	Scan Time	Tardiness (min)	Status	Details of Next Action	Incident Reported	Job Order Received
3-Megamall	20:05 - 20:08 (33.50min)	KTL1 area	06/03/2018 20:05	0	Late scan	Display a message		
		Cash Point near Zone H	06/03/2018 20:09	0	On Time	Is the generator working?		
		Zone E	06/03/2018 20:09	0	Late scan	Check and report incident		
		Zone C	06/03/2018 20:08	0	Late scan	No action. Capture logs only		

Summary							
CHECKPOINT				TARDINESS		EVENTS	
Scanned	4	On Time	1	Late	14 min	Incident Reported	0
Missed	2			Early	0 min	Job Orders	0
Total	6			Total	14 min		

Pre-Configured Reports



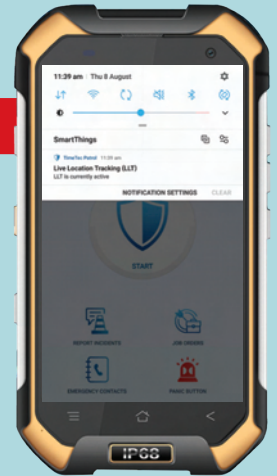
## HOW DOES PANIC BUTTON WORK IN TIMETEC PATROL?



### SOLUTION

When a patrol guard performs his duty using TimeTec Patrol, the App comes with a panic button which he can long-press during an emergency for assistance. When he pushes the panic button, the smartphone will trigger the phone's camera to capture photos automatically and send the images to the server for any shred of evidence. Simultaneously, the App will alert the emergency contacts of the guard, indicating that the guard is under duress and in need of help.

## CAN THE GUARD PERFORM CHECK-IN IF THE CHECKPOINT LOCATION DOESN'T HAVE ANY INTERNET CONNECTION, LIKE AT THE BASEMENT PARKING?



### SOLUTION

TimeTec Patrol Mobile App has an Offline Mode where guards can still use the App to carry out their duties without a connection to the Internet. When the mobile phone is online again, the system will push all the data to the server for processing.

## TIMETEC PATROL DEPLOYMENT AT A HOSPITAL A REAL CASE STUDY



### REQUIREMENTS

### SOLUTIONS

#### ● Better Patrol Scheduling Management

Set various patrol schedules efficiently, assign the created schedules with specific patrol routes as and when necessary. Change guards schedules easily for ad-hoc tasks.

#### ● Low Hardware Investment Cost

Using economical Android phone with NFC technology at patrolling tool to scan NFC tags as checkpoints, centralize all activities & data in the TimeTec Patrol App.

#### ● Multiple Patrolling Locations Management

Centralize patrolling data in different locations under one single account for easier management. Grant system login to the person-in-charge in each area with limited access and generate reports per site.

#### ● Patrol Round Effectiveness

TimeTec Patrol cloud-based solution offers useful tools for security guards to use in their tour duty. Options include NFC, beacon, and rugged device to relay data faster in real-time for quicker mitigation.

#### ● Tracking of Patrol Rounds in Real-Time

View all scanning of checkpoints using the smartphone in real-time and store data securely in the system.

#### ● Randomization of Patrol Schedule

Randomize the patrol schedules to maintain high-security level during patrol rounds and the audit trail of these schedules are always available for reference.

#### ● Real-time Reporting and Instant Emergency SOS

Report all discrepancies and problems found during patrol rounds through TimeTec Patrol App in real-time. Notify emergency contacts instantly during an emergency.

#### ● Complete Overview of Patrol Activities

All patrol activities in the system are transparent, reliable, and traceable. Generate detailed reports at any time.

# TIMETEC SMART SECURITY PLATFORM

www.epicamera.com



## CLOUD SURVEILLANCE SOLUTION

Epicamera - Standalone or Surveillance Across TimeTec Systems

Subscribe to a security system that is affordable and manageable by giving direct control to designated administrators. Set up any number of compatible IP cameras or webcams easily to store the data online and view your premises by simply logging in to your EpiCamera account via a web browser or even mobile applications. View live stream or playbacks at your fingertips and generate reports to evaluate the effectiveness of your system. EpiCamera provides the security that you need and deserve, giving you peace of mind.

### FEATURES

- INTERNET-BASED SURVEILLANCE
- INSTANT LIVE VIEW
- MOTION DETECTION ALERTS
- ARCHIVED IMAGE LISTING
- WORKS WITH IP-CAMS & WEBCAMS
- WORKS ON ALL MOBILE PHONES & TABLETS
- AUTO CAPTURE AND STORE IMAGE
- STORE ON CLOUD
- MULTIPLE ADMINISTRATORS
- WORKS WITH INGRESS ACCESS CONTROL APPLICATION
- WORKS WITH TIMETEC ACCESS, TIMETEC PATROL & I-NEIGHBOUR
- SUPPORT ALL ONVIF STANDARD IP CAMERAS





# THE BENEFITS OF TIMETEC EPICAMERA

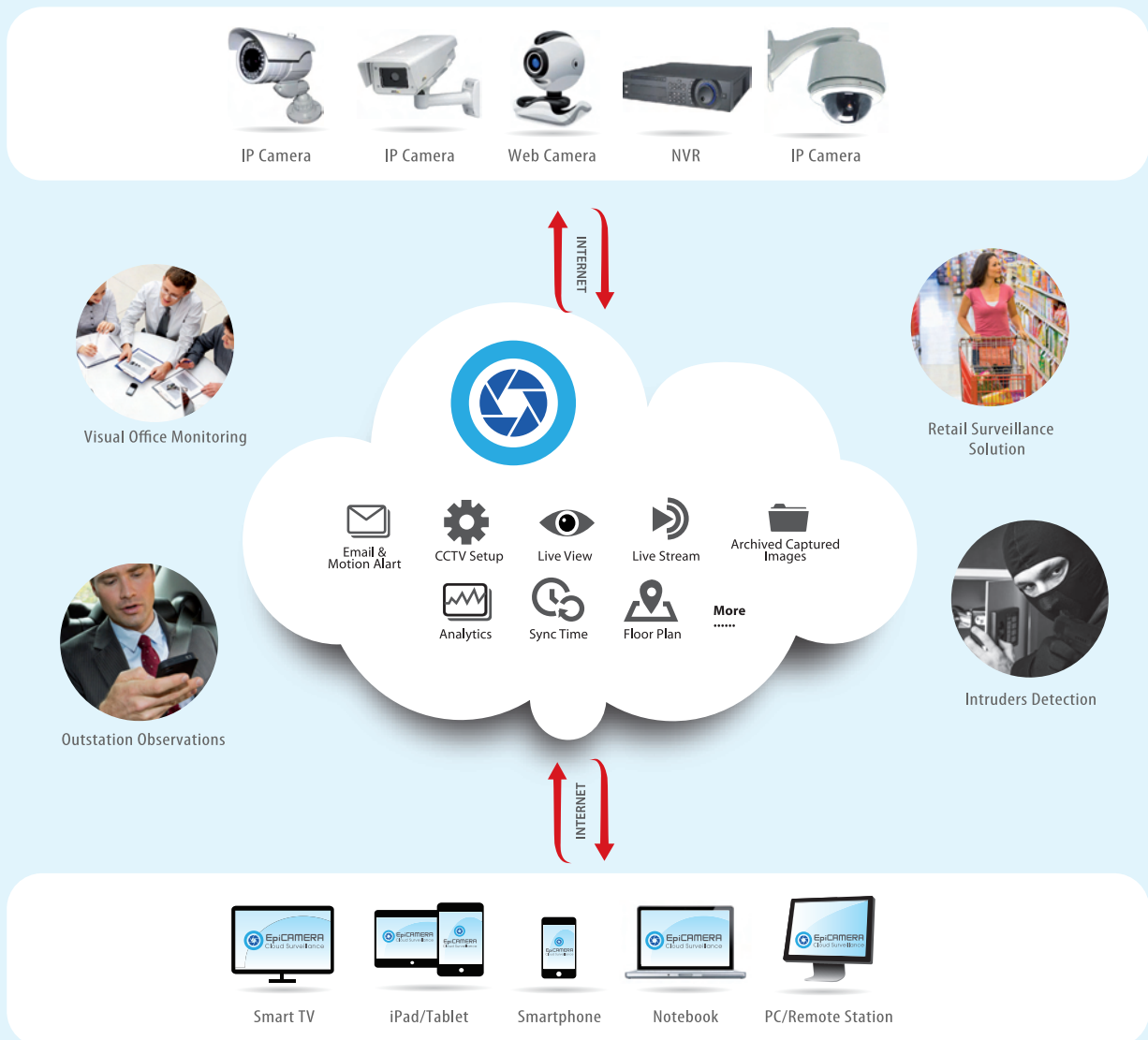


## OFFICE USERS

- More storage
- Remote maintenance
- Always accessible
- Regular updates
- Scalable and upgradable
- Compact and convenient
- Increase stability
- Cost effective



## HOW TIMETEC EPICAMERA WORKS





The collage illustrates the EpiCamera Cloud Surveillance system's capabilities across different platforms:

- Website Download Page:** Shows the process of downloading the EpiCamera software for various operating systems (Windows, Mac, Linux, Android, iOS).
- Web Interface (Map View):** Displays a map-based interface for managing multiple cameras, allowing users to view live feeds and configure settings.
- Web Interface (Playback & Analysis):** Shows a detailed view of captured footage, including a timeline and various analysis tools like image, video, and face detection.
- Mobile App Login:** Displays the login screen for the EpiCamera mobile app, requiring email and password.
- Mobile App Live View:** Shows the live view interface on a mobile device, displaying multiple camera feeds in a grid.
- Mobile App Statistic Report:** Displays a detailed report on camera performance, including average upload speed and image statistics.

A large security camera is shown in the foreground, pointing towards a city skyline, symbolizing the system's role in surveillance and security.



## TIMETEC SMART OFFICE PLATFORM

Manage visitors at your office premises and parking spaces effectively with TimeTec Smart Office solutions, TimeTec VMS and TimeTec Parking. Incorporating cloud technology, mobile-based and IoT, TimeTec solutions bring a smart office to new heights.



**VISITOR**  
MANAGEMENT



**PARKING**  
MANAGEMENT



# TIMETEC SMART OFFICE PLATFORM



## VISITOR MANAGEMENT

TimeTec VMS - Visitor Management System for Smart Office

A Visitor Management System tool that helps companies managing the ins and outs of visitors, maintaining a certain degree of security as well as providing convenience and courtesy towards visitors.

### FEATURES

- PRE-REGISTER VISITORS
- BLACKLIST MENACE
- QR CODE VERIFICATION
- WALK-IN VISITOR
- CUSTOMIZABLE FORM
- NOTIFICATION
- CALENDAR VIEW
- MULTILINGUAL
- LIFT ACCESS
- TURNSTILE ACCESS
- DOOR ACCESS
- MULTI COMPANIES





# THE BENEFITS OF TIMETEC VMS



## BOSSES/DIRECTORS

- Keeping track of visitors
- Improve overall visitor experience
- Improve premises security



## MANAGERS

- Monitoring meetings
- Meeting arrangements made easy
- Details of meeting documented



## EMPLOYEES

- Details of meetings documented
- Get notification of visitation/meeting reminders
- Well planned meetings
- Easy access



## BUILDING MANAGER

- Record all visitors
- Block Blacklisted visitors
- Reduce human error in documenting the visitors
- Generate the overall report and analysis of visitors remotely



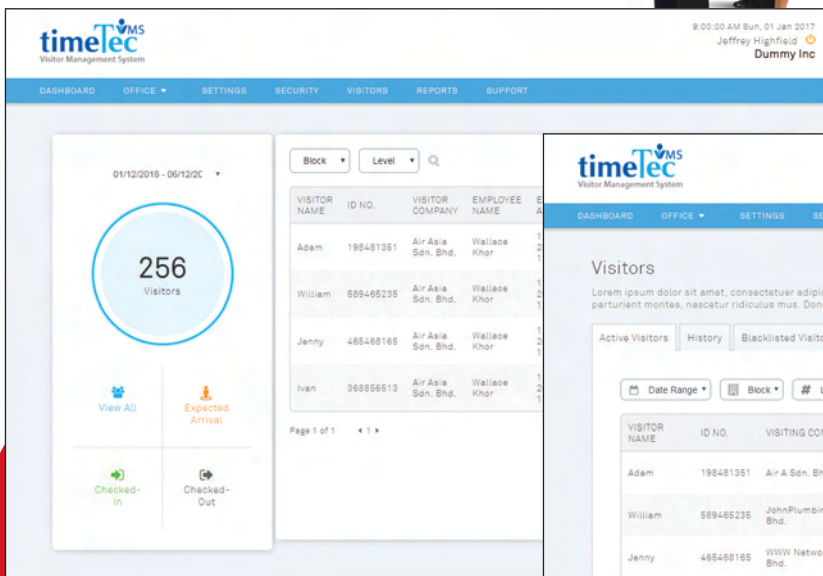
## VISITORS

- Efficient registration process
- Accurate pre filled Information
- Secure ID storing
- Visit details are available
- QR code for convenient access



## GUARDS AND RECEPTIONIST

- Keeping track of blacklisted visitors
- Reduce the workload of the guards/receptionist
- Faster walk-in registration
- Gather details accurately and fast



Dashboard-data

**timeTec VMS**  
Visitor Management System

9:00:00 AM Sun, 01 Jan 2017  
Jeffrey Highfield  
Dummy Inc

DASHBOARD OFFICE SETTINGS SECURITY VISITORS REPORTS SUPPORT

**Visitors**

Active Visitors History Blacklisted Visitor

Date Range Block # Level

VISITOR NAME	ID NO.	VISITING COMPANY	EMPLOYEE NAME	EXPECTED ARRIVAL	CHECKED-IN	CHECKED-OUT	EDIT
Adam	198481351	Air A Sdn. Bhd.	Wallace Khor	12 Aug 2018, 12:00 PM	-	-	CHECK-IN
William	589465235	John Plumbing Sdn. Bhd.	John	12 Aug 2018, 11:00 AM	12 Aug 2018, 11:01 AM	-	CHECK-IN
Jenny	485468165	WWV Network Sdn. Bhd.	Lee Ming Tian	12 Aug 2018, 10:30 AM	12 Aug 2018, 10:39 AM	-	CHECK-IN
Ivan	368856513	Cooling Sdn. Bhd.	Hassan	12 Aug 2018, 10:00 AM	12 Aug 2018, 10:25 AM	-	CHECK-IN

Page 1 of 1

Total of records (s): 1

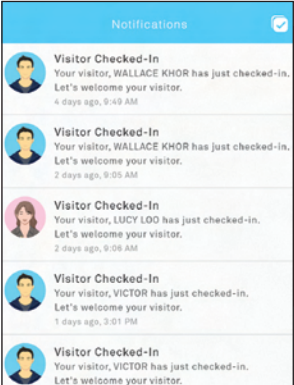
Visitor-Active



View calendar for your invites and visits



View details of every visit



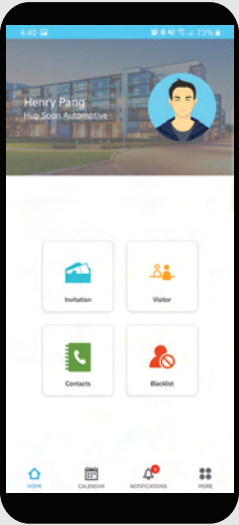
Get instant notification when your visitor checks in



View your full visitor list



Block/Blacklist unruly visitors to heighten security (Admin function only)



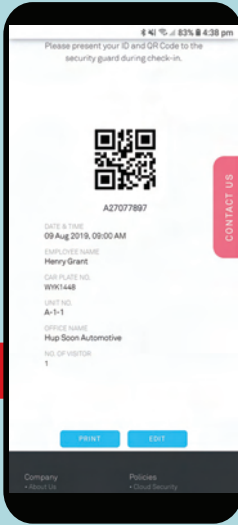
WHY SHOULD **TIMETEC VMS** BE YOUR CHOICE

**SOLUTION**

There are plenty of reasons for a company to be choosing TimeTec VMS. First, it is a comprehensive Cloud Visitor Management System that caters for different roles within a company. The design of the system is multi-tenancy that can house many branches and companies in one system. Via TimeTec VMS, manage all visitation records and visitors' profiles in one system, maintain decent visitor list and lockout blacklist visitors to maintain security in your office environment. It also provides a professional and user-friendly interface for visitor registration. Moreover, with TimeTec VMS users can check and approve visitation request online. The App also notifies the host when their visitor has arrived, provides updates on the visitation status; whether the visitor has checked-in or left the building.

DO YOU NEED VISITORS TO **DOWNLOAD** YOUR APP, ONLY THEN THEY CAN USE YOUR SYSTEM?

**SOLUTION**



No. To keep a smooth and secure visitor management system, the host will send the invitation (with QR Code) via message/communication app to the visitor. The visitor will then fill in his details and present the QR Code upon arrival. The guard/receptionist will then confirm his personal information before allowing him to enter the premises. A smooth registration process for visitors without the need to download any App. However, we encourage regular visitors to download the App for convenience purposes and smoothen the visitations.



## 3 DIFFERENT INTERFACES FOR TIMETEC VMS



### Receptionist/Guard Tablet

An App embedded with an Optical Character Recognition (OCR) features to read and extract information from a driver's license, an identity card, or a passport to better enhance the security aspect of the system. It helps guards or receptionists to register and generate QR codes for walk-in visitors and to scan pre-registered visitors' QR codes.



### Self-service Tablet

A wireless cloud-based video intercom system as a self-service visitor registration panel placed on a receptionist counter or being wall-mounted at the lobby door as a smart door system. After the registration, the i-Comm panel would allow visitors to video call the host that has installed a TimeTec VMS App.



### Interactive Robot

An interactive robot receptionist loaded with interactive Artificial Intelligence (AI) features and integrated with all the TimeTec IoT access control devices which enable its role in ushering visitors. Hubot XV interacts with humans to achieve automation and security for visitor management at office towers. It helps register and verify visitors, and arrange visitor to video call the host and to open the door for the visitor if the host accepts the visitation.



## VISITOR ACCESS CONTROL WITH AUTHENTIC QR CODE

### QR Master

An authentic QR code access control system integrated with TimeTec VMS. A great tool to tighten up TimeTec VMS visitor access control around its premises. Whenever visitors pre-register, they will receive a QR code via email or WhatsApp, and walk-in visitors will receive an on-the-spot QR code for access to any designated doors.



# TIMETEC SMART OFFICE PLATFORM

www.timetecparking.com



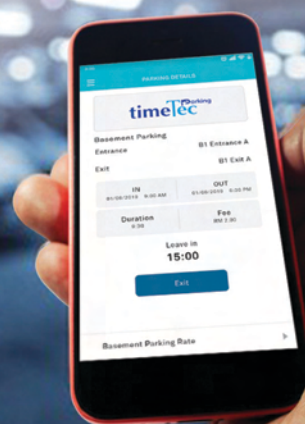
## PARKING MANAGEMENT

TimeTec Parking - Smart City Parking Management Solution

This is a smart parking management tool that helps office buildings and shopping malls to manage their parking lots conveniently. Through cloud multi-tenant TimeTec Parking, the company defines its parking rates, promotions, and e-payment implementation for parking rates.

### FEATURES

- PARKING LOTS AVAILABILITY
- PARKING RATE
- MOBILE PAYMENT/E-RECEIPT
- QR ACCESS
- HISTORY
- i-MERCHANTS LISTING
- i-AD POP UPS
- CASHLESS



# THE BENEFITS OF PARKING



## BOSSES/DIRECTORS

- Easy management of different parking rates
- Management of parking promotion
- Better and more convenient parking management system
- Useful reports and analysis



## OFFICE BUILDING MANAGERS/ PARKING OPERATORS

- Online transaction parking payments
- Manage parking lots efficiently
- Define different rates for various timings
- Customize pricing for special packages
- Generate useful reports and analysis



## SHOP OWNERS WITHIN A MALL/OFFICE

- Collaboration opportunity
- Better parking system
- Season parking
- Parking discount



## IT EXECUTIVES

- Parking stations are obsolete
- Provide remote support through cloud
- No local server required
- Less maintenance



## VISITORS

- Scout parking lots availability
- E-payment is available
- No queue up for parking payment
- No risk of losing parking ticket
- Rates are available on the App
- Seamless linking between parking premises
- Parking histories
- Discounts and promo codes



## TIMETEC PARKING SYSTEM WORKING MECHANISM

### STEP 1



- The QR code represents a unique serial number of a TimeTec BLE-2
- The App translates the serial number into a different unlock command to send to the TimeTec BLE-2.
- It requires no internet connection at this stage.

### STEP 2



- When the App is online, it sends the TimeTec BLE-2 serial number to the cloud server to determine the parking location and its rate.
- The cloud server takes the "scan in time" as the parking start time.
- It requires an internet connection to send the data to the cloud server.

### STEP 3



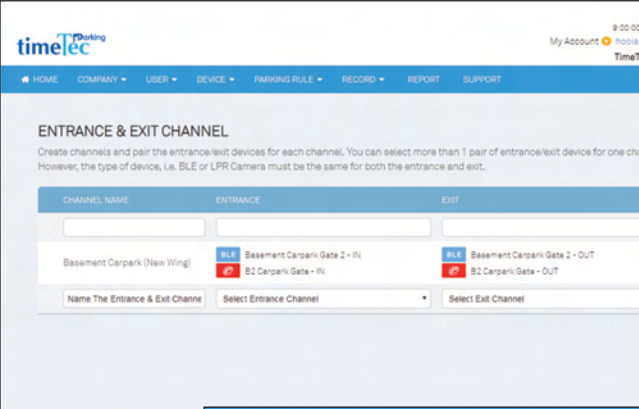
- A user scans the QR code at an exit gate to access it and leave.
- This stage does not require an internet connection.

### STEP 4

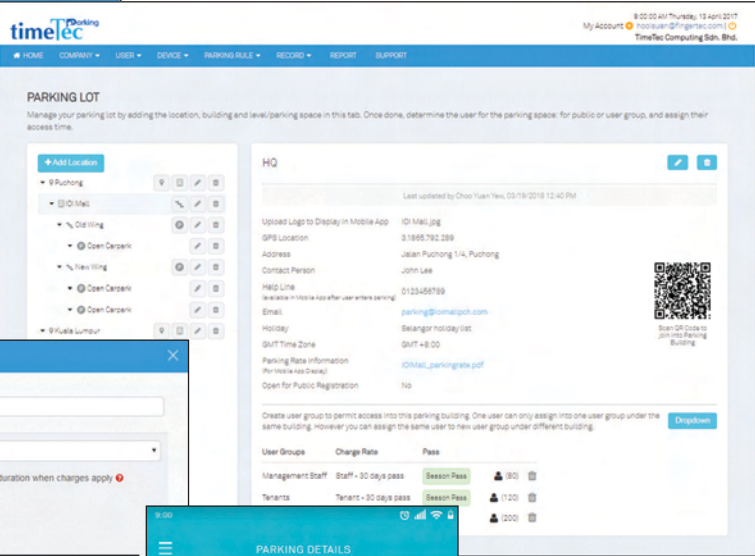


- The App sends the "exit time" to the cloud server to compute the parking fare based on the parking rate. The App pays the fare via e-Wallet App automatically.
- This step requires an internet connection to send the data from the App to the cloud server for the payment process.

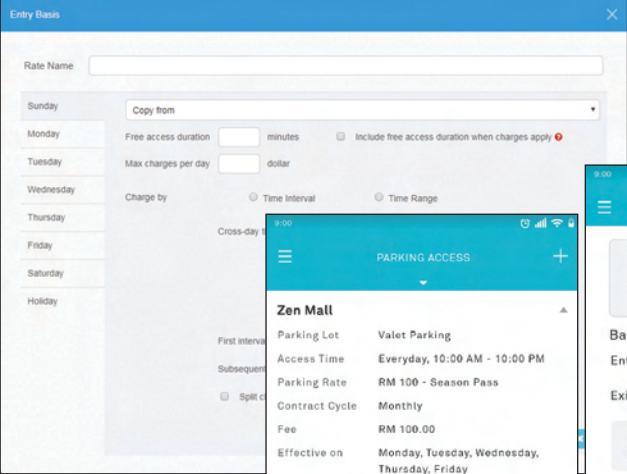




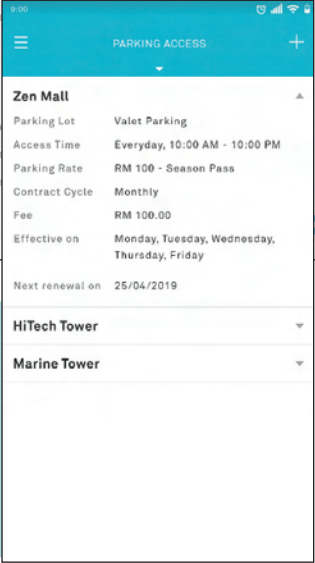
Configuration of different car park entries and exits



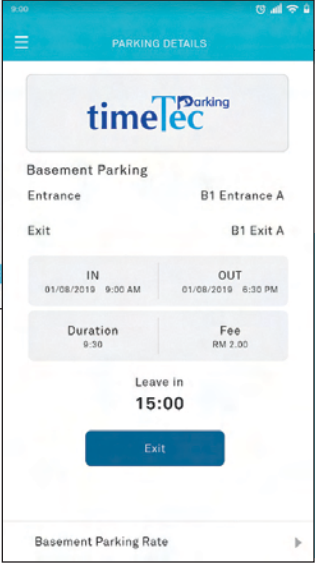
Review or parking locations and buildings



Configurations of different parking charge rates-



Review parking time and parking fees



Support most of the e-wallets as payment gateway



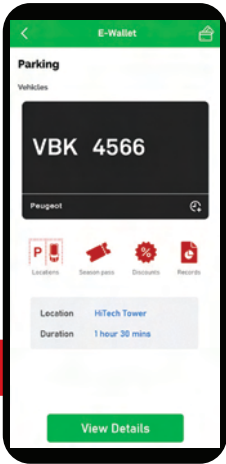
AS A PARKING OPERATOR WHO ALREADY MANAGED A FEW PARKING OPERATIONS, CAN **TIMETEC PARKING SYSTEM** INTEGRATE AND CO-EXIST WITH MY OLD PARKING SYSTEM?

**SOLUTION**

Yes. The existing users can still use the previous method(s) to access and pay parking fees. To assimilate TimeTec Parking with your existing system, we need to integrate BLE-2 or LPR into the access controller of your current parking barriers. Our hardware will provide the unlock signal for your existing access controller without interrupting your existing software. Our cloud server calculates the parking fees based on the access records available. Therefore, it would not affect your current system at all.

CAN E-WALLET PROVIDER INTEGRATE WITH **TIMETEC PARKING SYSTEM**?

**SOLUTION**



Yes. TimeTec as a technology partner is providing a front-end parking barrier, TimeTec BLE-2 SDK, and a back-end multi-tenant cloud parking system API for e-Wallet providers to integrate to its e-Wallet system. With this possible integration, e-Wallet users will need to open their e-Wallet App to scan the QR code placed at the entry and exit barrier of any shopping malls or office towers that are using TimeTec Parking System to complete a parking process. The TimeTec BLE-2 can be integrated with almost all the current parking barrier systems to keep a low deployment and maintenance cost.







## TIMETEC BLE-2 FOR SMART DOOR



TimeTec BLE-2

## SPECIFICATIONS

MODEL	TIMETEC ACCESS CONTROLLER BLE-2
CHANNELS	3 FORM C Relay output, NO/NC selected via jumper, Wiegand 26-bit input
GATES	Max 2
DIMENSION (MM)	85 (L) x 96 (W) x 33 (H)
POWER INPUT	DC12V
WORKING TEMPERATURE (°C)	0-45
HUMIDITY (%)	20-80
CARD STORAGE	1,000
COMMUNICATION	Bluetooth Low Energy (BLE) 4.2, Wiegand 26-bit input
BLUETOOTH ENCRYPTION	64-bit TimeTec Proprietary
EFFECTIVE DISTANCE (M)	Max 10 m (Adjustable)
LED INDICATOR	Yes
TRANSACTION RECORDS	Unlimited, stored in cloud server
EVENT CAPACITY	Unlimited, stored in cloud server
MOBILE OS	Android 4.0.2 and above, iOS 8.0 and above
APP & CLOUD	i-TimeTec, TimeTec Access, TimeTec VMS, i-Neighbour

## TIMETEC BLE-5



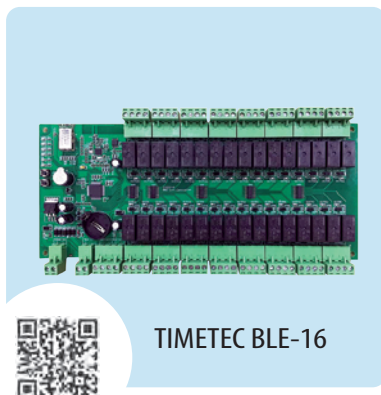
TimeTec BLE-5

## SPECIFICATIONS

MODEL	TIMETEC ACCESS CONTROLLER, BLE-5
<b>BASIC</b>	
Dimension (L X W X H), mm	130 x 130 x 45
Power input (V)	DC 12V 3A
Battery input	DC 12V
Operating temperature (°C)	0 - 55
Operating humidity (%)	10 - 80
CPU	Core: Arm® 32-bit Cortex®-M4 CPU 100 MHz
Flash memory (MB)	1.5
SRAM (KB)	320
Polarity protection	Yes
<b>COMMUNICATION</b>	
WiFi	Yes (AWS IoT connection)
Bluetooth	Bluetooth Low Energy 4.2
Smartphones	Android 4.4.2 and above, iOS 8 and above
<b>STORAGE</b>	
Users	Unlimited, controlled by Cloud Storage
Transactions	Unlimited, controlled by Cloud Storage
<b>INPUT</b>	
Push release button	1
Door sensor	1
Siren Mute	1
<b>OUTPUT</b>	
Door lock (12VDC 10A form C relay)	1
Siren Output	1 (max 2.0A)
<b>ACCESS CONTROL FEATURES</b>	
Main features	Door access, Door opening timer, Time zones (max 48 set per day), Holiday time zones(max 48 set per day), Permanent door release/lock time zones, Antipassback, Interlocking, Door status monitoring, Door force open alarm, Door open time out alarm, Duress alarm
SOFTWARE	TimeTec Access, TimeTec VMS



## BLE-16 FOR SMART LIFT



TIMETEC BLE-16

## SPECIFICATIONS

MODEL	<b>TIMETEC LIFT CONTROLLER BLE-16</b>
CHANNELS	16 FORM C Relay output, Failed Safe bypass design
FLOORS	16 (extend by expansion board)
DIMENSION (MM)	180 (L) x 231 (W) x 62 (H)
WEIGHING (KG)	1.7
POWER INPUT	9 ~ 12 VDC
WORKING TEMPERATURE (°C)	20 ~ 80
HUMIDITY (%)	10 ~ 90
COMMUNICATION	Dual BLE 4.0 & 4.2
BLUETOOTH ENCRYPTION	64-bit TmeTec Proprietary
LED INDICATOR	Yes
TRANSACTION RECORDS	Unlimited, stored in cloud server, local 1000 transaction
EVENT CAPACITY	Unlimited
MOBILE APP	Android 4.0.2 and above, iOS 8.0 and above
APP & CLOUD	i-TimeTec, TimeTec Access, TimeTec VMS, i-Neighbour

## TL-40B SUPERIOR SMART LOCK



KEYLOCK TL-40B

## SPECIFICATIONS

MODEL	<b>KEYLOCK TL-40B</b>
SURFACE FINISHING	Zinc alloy
TYPE OF SCANNER/ANTENNA	Optical fingerprint scanner
ALGORITHM	Biobridge VX 10.0
RESOLUTION OF SCANNER (dpi)	560
PRODUCT DIMENSION (L X W X H), mm	Front panel: 72 x 30 x 310 (with handle), Back panel: 72 x 34 x 310 (with handle)
Thickness of door, mm	30-38 (optional), 50-65 (optional)
Door latch type	Mortise design with single latch and two deadbolts
Inner lock switch	Yes
<b>STORAGE</b>	
Fingerprint templates	100
Password	100
Card	100
Bluetooth	Unlimited users for i-TimeTec App & i-Neighbour App
<b>FINGERPRINT &amp; VERIFICATION</b>	
Fingerprint	1: N
Recommended fingerprint per user ID	2
Fingerprint placement	Any angles
Verification time (sec)	< 1
FAR (%)	< 0.0001
FRR (%)	< 0.1
<b>BLUETOOTH VERIFICATION</b>	
Communication	Bluetooth 4.0
<b>OPERATING ENVIRONMENT</b>	
Voice guidance	Yes
Temperature (°C)	- 20 to - 55
Humidity (%)	20 ~ 80
Power input	4 x 1.5v AA battery for 6000 operations
Power consumption – static (μA)	< 35
Power consumption – activity (mA)	< 135
Power consumption – driving (mA)	< 200
Antistatic voltage (V)	> 1500
Low battery warning voltage (V)	< 4.5
BACKUP UNLOCK MECHANISM	Battery & mechanical key
MOBILE OS	Android 4.0.2 and above, iOS 8.0 and above
APP & CLOUD	i-TimeTec, TimeTec Access, TimeTec VMS, i-Neighbour

## TIMETEC LPR PACKAGE

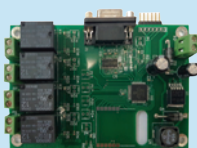
**timeTec** LPR  
License Plate Recognition



LPR CAMERA



LED PANEL



GATE RELAY BOARD

## SPECIFICATIONS

**2 x LPR Camera for entry and exit****ITC215-PW4I-IRLZF27135**

- 2 Megapixel Full HD AI Access LPR Cameras
- 1/2.8 inch 2Megapixel Progressive scan CMOS
- WDR, Day/Night(ICR), 3DNR,BLC, HLC
- H.265& H.264 dual-stream encoding
- Powerful 2.7-13.5mm motorized lens and IR light, ideal for monitor LPR distance 3-8m
- IP67, and superior performance for outdoor applications

## SPECIFICATIONS

**2 X LED Panel****32x16 Dot Matrix LED**

- Communication : RS 232
- Display data : ASCII characters
- Display dimension : 320 mm x 160 mm
- Display resolution : 32 x 16 pixel
- Font size : 70 mm x 50 mm
- Display style : 1 line rolling or 2 lines static

## SPECIFICATIONS

**1 x LPR Gate Relay Board**

- Power input : 12VDC 3A
- Output : 2 x FORM C relay

## TIME BEACON



TIME BEACON

## SPECIFICATIONS

MODEL	TIME BEACON
SIZE (H X W X L)	10 mm x 45 mm x 45 mm
POWER	3VDC button battery (CR2477)
COMMUNICATION	Bluetooth Low Energy 4.0
CHIPSET	Type I - Nordic 51822
MOBILE OS SUPPORT	iOS 6.0 and above, Android 4.3 and above
WORKING MODE	3 (Sleep mode, Connect Mode, Disconnect mode)
TX POWER	4 selections (-23dBm, -6dBm, 0dBm, +4dBm)
OPERATING TEMPERATURE (°C)	-10 ~ 85
STORAGE TEMPERATURE (°C)	-10 ~ 85
MOUNTING METHOD	Adhesive sticker
CERTIFICATIONS	CE, FCC, RoHS

## TABLET FOR i-COMM/i-VIZIT



SAMSUNG GALAXY TAB



### SPECIFICATIONS

MODEL	<b>SAMSUNG GALAXY TAB 10.1</b>
<b>NETWORK</b>	
Technology	GSM / HSPA / LTE
<b>BODY</b>	
Dimensions	254.2 x 155.3 x 8.2 mm
Weight	2.62 kg (Tablet Panel + Panel)
<b>DISPLAY</b>	
Type	PLS LCD capacitive touchscreen, 16M colors
Size	10.1 inches
Resolution	1200 x 1920 pixels, 16:10 ratio
<b>MEMORY</b>	
Card Slot	MicroSD, up to 256 GB (dedicated slot)
Internal	32 GB, 3 GB RAM
<b>CAMERA</b>	
Primary	8 MP, f/1.9, autofocus, LED flash
Secondary	2 MP, f/2.2, 1080p video
<b>SOUND</b>	
Alert types	MP3, WAV ringtones
Loudspeaker	Yes
3.5mm jack	Yes
<b>COMMS</b>	
Wlan	Wi-Fi 802.11 a/b/g/n/ac, dual-band, WiFi Direct, hotspot
Bluetooth	4.2, A2DP, LE
GPS	Yes, with A-GPS, GLONASS, Beidou
USB	MicroUSB 2.0
<b>BATTERY</b>	
OS	Android 6.0
SDK	Samsung Knox 2.8
SOFTWARE	i-Vizit App, i-Comm App

## TIMETEC HUBOT XV VISITOR RECEPTION ROBOT



HUBOT XV

### SPECIFICATIONS

MODEL	<b>TIMETEC HUBOT XV VISITOR RECEPTION ROBOT</b>
DIMENSION, MM	1319 x 570 x 310
MOVEMENT	Traversable along paved road and sidewalks, packed dirt, slopes, obstacles (1cm), gaps (3cm)
DRIVING WHEELS AND ENCODERS	2 differential driving wheels, nominal power 400 W x 2 with high precision hall and magnetic encoders
CAMERA	Front facing camera 720p HD
INPUT	Keyboard, camera
OUTPUT	Voice greeting & guidance
ON BOARD SENSORS	Ultrasonic sensors, infrared distance sensors, encoders, IMUs
ON BOARD SYSTEM	Android 5.1
CONNECTIVITY	WiFi (802 b/g/n), NFC, Bluetooth 5.0
BATTERY SPECS	Battery capacity 6450mAh, nominal voltage 51 Vdc, maximum charging voltage 58.8 Vdc
WORKING DURATION	6 hours
WEIGHT	Approx. 32 kg
APP & CLOUD	TimeTec VMS, i-Neighbour
LANGUAGE & SPEECH	English, Arabic, Malay, Indonesia, Spanish, Chinese, Thai, Turkish, Vietnamese. Other languages are available upon request.



## FACE MASTER & QR MASTER



### SPECIFICATIONS

MODEL	ANDROID PHONE
TYPE OF SCANNER	5 MP front facing camera
MICROPROCESSOR	Quad-core A53 structure, Clock speed as high as 2.0GHz
MEMORY	2GB
DIMENSION (L X W X H), mm	147.5 x 71.5 x 8.3
OPERATING SYSTEM	Android 4.0.2 and above
COMMUNICATIONS	
WiFi	802.11b/g/n
Network	GSM (B2/3/5/8), WCDMA (B1/2/5/8), TDD-LTE (B38/40), FDD-LTE (B1/2/3/4/5/7/8/20)
Bluetooth	Bluetooth 4.2
OPERATING ENVIRONMENT	
Temperature (°C)	0 ~ 45
Humidity (%)	20 ~ 80
Power	Non-removable Lithium battery, 3000mAh
SOFTWARE	QF Master App

## TIMETEC TURNSTILE



### SPECIFICATIONS

MODEL	SBTL5000
POWER REQUIREMENTS	AC 100 ~ 120V/200 ~ 240V, 50/60Hz
WORKING TEMPERATURE (°C)	-28~60
WORKING HUMIDITY (%)	20-95 (Non-condensing)
WORKING ENVIRONMENT	Indoor
SPEED OF THROUGHPUT	RFID: Maximum 30/ minute
FINGERPRINT	Maximum 25/ minute
LANE WIDTH(MM)	650
FOOTPRINT(MM*MM)	1400*1010
DIMENSIONS(MM)	L=1400, W=180, H=1000
DIMENSION WITH PACKING(MM)	L=1500, W=260, H=1100
NET WEIGHT(KG)	120
WEIGHT WITH PACKING(KG)	150
CABINET MATERIAL	SUS304 Stainless Steel
LID MATERIAL	Tempered Glass
BARRIER MATERIAL	Tempered Glass
BARRIER MOVEMENT	Swing
EMERGENCY MODE	Yes
SECURITY LEVEL	Security level Medium
MCBF	2 million

## TIMETEC KEY FOB



### SPECIFICATIONS

MODEL	TIMETEC KEY FOB
DIMENSION (MM)	50 x 30 x 15
POWER SOURCE	1 x CR2032 coin cell
MICROCONTROLLER	Integrated 32-bit ARM Cortex M0 CPU
MEMORY	64kb
OPERATION BUTTONS	4-channels programmable buttons
WORKING TEMPERATURE (C)	0 - 45
WORKING HUMIDITY (%)	20 - 80



# BIOMETRICS HARDWARE

## TIME ATTENDANCE MODELS



www.fingertec.com



### SPECIFICATIONS

MODEL	TA700W	AC100C	TA100C/ TA100C-R
<b>SURFACE FINISHING</b>	Acrylonitrile Butadiene Styrene (ABS) & Polycarbonate (PC)	Acrylonitrile Butadiene Styrene (ABS)	Acrylonitrile Butadiene Styrene (ABS)
<b>TYPE OF SCANNER</b>	Non coated optical scanner	Non coated optical scanner	Non coated optical scanner
<b>MICROPROCESSOR</b>	180 MHz	800 MHz	800 MHz
<b>MEMORY</b>	8 MB flash memory & 16 MB SDRAM	256 MB flash memory & 128 MB SDRAM	256 MB flash memory & 128 MB SDRAM
<b>ALGORITHM</b>	BioBridge VX 10.0	BioBridge VX 9.0 / VX 10.0	BioBridge VX 9.0 / VX 10.0
<b>PUSH TECHNOLOGY</b>	Yes	Yes	Yes
<b>DIMENSION (L X W X H), mm</b>	165 x 14 x 122	195 x 48 x 144	190 x 52 x 140
<b>STORAGE</b>			
Templates	Fingerprint 1,000	Fingerprint 8,000	Fingerprint 8,000
Transactions	50,000	200,000	200,000
<b>ENROLLMENT &amp; VERIFICATION</b>			
Methods	Fingerprint (1:1, 1:N) & password	Fingerprint (1:1, 1:N) & password	Fingerprint (1:1, 1:N) & password (Optional RFID Card)
Recommended fingerprint per user ID	2 (Max 500 User ID)	2	2
Fingerprint placement	Any angle	Any angle	Any angle
Card reading distance, mm	×	×	40 ~ 80 (RFID, HID), 30 ~ 50 (Mifare)
Verification time (sec)	< 1	< 1	< 1
FAR (%)	< 0.01	< 0.0001	< 0.0001
FRR (%)	< 0.1	< 1	< 1
<b>CARD TECHNOLOGY</b>			
RFID: 64-bit, 125kHz	×	×	Yes (TA100C-R only)
MIFARE: MFIS50/S70, 13.56MHz	×	×	Made to order (MF only)
HID: HID 1325, 26-bit, 125kHz	×	×	Made to order (HID only)
<b>COMMUNICATIONS</b>			
Method	WiFi, USB	TCP/IP, USB disk (Optional RS232 & RS485)	TCP/IP, USB disk (Optional RS232/485, WiFi & GPRS)
Baud rates	×	9600 ~ 115200	9600 ~ 115200
Wiegand	×	×	×
<b>OPERATING ENVIRONMENT</b>			
Temperature (°C)	0 ~ 45	0 ~ 45	0 ~ 45
Humidity (%)	20 ~ 80	20 ~ 80	20 ~ 80
Power input	DC 5V 0.8A	DC 5V 2A	DC 5V 2A
<b>TIME ATTENDANCE</b>			
Siren	×	×	Built-in and external
Work codes	Yes	Yes	Yes
Fast Transaction Checking	×	×	×
<b>MULTIMEDIA</b>			
Voice	Yes	Yes	Yes
Display	2.8" 65k color TFT screen	3.0" 65k color TFT screen	3.0" 65k color TFT screen
Photo ID	×	Yes	Yes
Short Messaging	×	Yes	Yes
Day Light Saving Timer	×	×	×
Internal Backup Battery	×	×	×



## SPECIFICATIONS

MODEL	TA200 Plus/ TA200 Plus POE	Face ID 4	TimeLine 100
<b>SURFACE FINISHING</b>	Acrylonitrile Butadiene Styrene (ABS)	Acrylonitrile Butadiene Styrene (ABS)/ Polycarbonate blend	Acrylonitrile Butadiene Styrene (ABS)
<b>TYPE OF SCANNER</b>	Non coated optical scanner	High resolution infrared camera	×
<b>MICROPROCESSOR</b>	800 MHz	800 MHz	400 MHz
<b>MEMORY</b>	256 MB flash memory & 32 MB SDRAM	256 MB flash memory & 128 MB SDRAM	8 MB flash memory & 32 MB SDRAM
<b>ALGORITHM</b>	BioBridge VX 9.0 / VX 10.0	Face BioBridge VX 8.0	×
<b>PUSH TECHNOLOGY</b>	Yes	Yes	Yes
<b>DIMENSION (L X W X H), mm</b>	200 x 56 x 160	148 x 148 x 122	190 x 50 x 140
<b>STORAGE</b>			
Templates	Fingerprint 10,000	Face: 800, Card: 10,000	Card: 10,000
Transactions	200,000	100,000	30,000
<b>ENROLLMENT &amp; VERIFICATION</b>			
Methods	Fingerprint (1:1, 1:N) card & password	Face (1:1, 1:N), card & password	Card & password
Recommended fingerprint per user ID	2	×	×
Fingerprint placement	Any angle	×	×
Card reading distance, mm	40 ~ 80 (RFID, HID), 30 ~ 50 (Mifare)	40 ~ 80 (RFID), 30 ~ 50 (Mifare)	40 ~ 80 (RFID, HID), 30 ~ 50 (Mifare)
Verification time (sec)	< 1	Face: < 2	< 1
FAR (%)	< 0.0001	Face: < 0.01	×
FRR (%)	< 1	Face: < 0.1	×
<b>CARD TECHNOLOGY</b>			
RFID: 64-bit, 125kHz	Yes	Yes	Yes
MIFARE: MFIS50/S70, 13.56MHz	Made to order	Made to order	Made to order
HID: HID 1325, 26-bit, 125kHz	Made to order	×	Made to order
<b>COMMUNICATIONS</b>			
Method	TCP/IP, USB disk (Optional RS232, RS485, POE & WiFi, 3G only applicable to non-POE devices)	TCP/IP, USB disk, USB client (Optional WiFi)	TCP/IP, USB disk (Optional RS232 & RS485)
Baud rates	9600 ~ 115200	9600 ~ 115200	9600 ~ 115200
Wiegand	×	×	×
<b>OPERATING ENVIRONMENT</b>			
Temperature (°C)	0 ~ 45	0 ~ 45	0 ~ 45
Humidity (%)	20 ~ 80	20 ~ 80	20 ~ 80
Power input	DC 12V 3A, DC 5V 2A (POE)	DC 12V 3A	DC 5V 2A
<b>TIME ATTENDANCE</b>			
Siren	Built-in (Optional external)	Built-in	Built-in and external
Work codes	Yes	Yes	Yes
Fast Transaction Checking	×	Yes	×
<b>MULTIMEDIA</b>			
Voice	Yes	Yes	Yes
Display	3.5" 65k color TFT screen	3.0" 65k color TFT touch screen panel	Black and white
Photo ID	Yes	Yes	×
Short Messaging	Yes	Yes	Yes
Day Light Saving Timer	×	Yes	×
Internal Backup Battery	×	×	×



## DOOR ACCESS MODELS

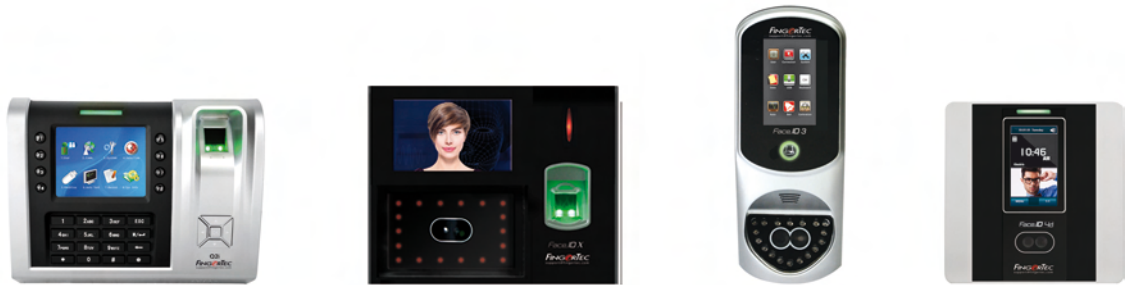


www.fingertec.com



## SPECIFICATIONS

MODEL	R2	R3	R2c (Slave)	R3c (Slave)	H2i
<b>SURFACE FINISHING</b>	Acrylonitrile Butadiene Styrene (ABS)	In-mould labelling (IML), poly carbonate (PC) & (ABS)	Acrylonitrile Butadiene Styrene (ABS)	Acrylonitrile Butadiene Styrene (ABS), IP65	Acrylonitrile Butadiene Styrene (ABS)
<b>TYPE OF SCANNER</b>	Non coated optical scanner	Non coated optical scanner	Non coated optical scanner	Non coated optical scanner	Non coated optical scanner
<b>MICROPROCESSOR</b>	400 MHz	400 MHz	Managed by master	1.0 GHz	300 MHz
<b>MEMORY</b>	128 MB flash memory & 32 MB SDRAM	256 MB flash memory & 32 MB SDRAM	Managed by master	Managed by master	256 MB flash memory & 32 MB SDRAM
<b>ALGORITHM</b>	BioBridge VX 9.0 / 10.0	BioBridge VX 10.0	BioBridge VX 10.0	BioBridge VX 10.0	BioBridge VX 9.0 / 10.0
<b>PUSH TECHNOLOGY</b>	Yes	Yes	×	×	×
<b>DIMENSION (L X W X H), mm</b>	94 x 50 x 189	78 x 32 x 190	64 x 42 x 135	77 x 38 x 121	78 x 50 x 150
<b>STORAGE</b>					
Templates	FP: 3,000	FP: 3,000	Storage in master terminal	Storage in master terminal	FP: 1,500
Transactions	120,000	100,000	Storage in master terminal	Storage in master terminal	100,000
<b>ENROLLMENT &amp; VERIFICATION</b>					
Methods	Fingerprint (1:1, 1:N) card & password	Fingerprint (1:1, 1:N) card & password	Fingerprint (1:N) & card	Fingerprint (1:N) & card	Fingerprint (1:N) & card
Recommended fingerprint per user ID	2	2	Managed by master	Managed by master	2
Fingerprint placement	Any angle	Any angle	Any angle	Any angle	Any angle
Card reading distance, mm	40~80 (RFID, HID), 30~50 (Mifare)	40~80 (RFID), 30~50 (Mifare)	40~80 (RFID), 30~50 (Mifare)	40~80 (RFID), 30~50 (Mifare)	40~80 (RFID, HID), 30~50 (Mifare)
Verification time (sec)	< 1	< 1	Managed by master	Managed by master	< 1
FAR (%), FRR (%)	< 0.0001, < 1	< 0.0001, < 1	Managed by master	Managed by master	< 0.0001, < 1
<b>CARD TECHNOLOGY</b>					
RFID: 64-bit, 125kHz	Yes	Yes	Yes	Yes	Yes
MIFARE: MFIS50/S70, 13.56MHz	Made to order	Made to order	Made to order	Made to order	Made to order
HID: HID 1325, 26-bit, 125kHz	Made to order	×	×	×	Made to order
<b>COMMUNICATIONS</b>					
Method	TCP/IP, RS232, RS485, USB disk	TCP/IP, RS232, RS485, USB disk	RS485	RS485	TCP/IP, RS232, RS485, USB disk
Baud rates	9600 ~ 115200	9600 ~ 115200	×	×	9600 ~ 115200
Wiegand	26-bit input/output	26-bit input/output	×	×	26-bit input/output
<b>OPERATING ENVIRONMENT</b>					
Temperature (°C)	0 ~ 45	0 ~ 45	0 ~ 45	0 ~ 45	0 ~ 45
Humidity (%)	20 ~ 80	20 ~ 80	20 ~ 80	20 ~ 80	20 ~ 80
Power input	DC 12V 3A	DC 12V 3A	Managed by Master	DC 12V 3A	DC 12V 3A
<b>TIME ATTENDANCE</b>					
Siren	×	×	×	×	×
Work codes	Yes	Yes	×	×	×
Fast Transaction Checking	×	×	×	×	×
<b>MULTIMEDIA</b>					
Voice	Yes	Yes	×	×	Yes
Display	Black and white	2.4" 3k color LCD	×	×	×
Photo ID	×	Yes	×	×	×
Short Messaging	Yes	Yes	×	×	×
Day Light Saving Timer	×	×	×	×	×
Internal Backup Battery	×	×	×	×	×
<b>ACCESS CONTROL</b>					
EM Lock driving output	DC 12V 3A / relay output	DC 12V 3A / relay output	Managed by master	Managed by master	DC 12V 3A / relay output
Alarm output	NO/NC	NO/NC	Managed by master	Managed by master	NO/NC
Anti passback	Yes	Yes	Managed by master	Managed by master	Yes



## SPECIFICATIONS

MODEL	Q2i	Face ID 2 (FMM)	Face ID-X	Face ID 3	Face ID 4D
SURFACE FINISHING	Acrylonitrile Butadiene Styrene (ABS)	Acrylonitrile Butadiene Styrene (ABS) & Acrylic			(ABS)/ polycarbonate blend
TYPE OF SCANNER	Non coated optical scanner	Hi-res infrared camera & fingerprint scanner		High resolution infrared camera	High resolution infrared camera
MICROPROCESSOR	800 MHz	1.2 GHz Single Core CPU	1.0GB SDRAM/1.0GB flash	800 MHz	800 MHz
MEMORY	256MB flash memory & 64MB SDRAM	128MB Nand flash & 64MB Nand flash		256MB flash memory & 128MB SDRAM	256MB flash memory & 128MB SDRAM
ALGORITHM	BioBridge VX 9.0 / 10.0	Face BioBridge VX 8.0, FP BioBridge VX 9.0/ 10.0		Face BioBridge VX 8.0	Face BioBridge VX 8.0
PUSH TECHNOLOGY	Yes	Yes		Yes	Yes
DIMENSION (L X W X H), mm	200 x 56 x 160	194 x 110 x 145		86 x 62 x 218	148 x 148 x 122
STORAGE					
Templates	FP: 10,000	FP: 10,000 Face:1,200 Card: 10,000	FP: 10,000 Face: 3000 (1:N), 30000(1:1) Card: 10,000	Face:1,500 Card: 10,000	Face: 800 Card: 10,000
Transactions	200,000	200,000	1,000,000	100,000	100,000
ENROLLMENT & VERIFICATION					
Methods	FP(1:1, 1:N) card & password	Face (1:1, 1:N), fingerprint (1:1, 1:N), card & password		Face (1:1, 1:N), card & password	Face (1:1, 1:N), card & password
Recommended fingerprint per user ID	2	2		×	×
Fingerprint placement	Any angle	Any angle		×	×
Card reading distance, mm	40~80 (RFID, HID), 30~50 (Mifare)	40 ~ 80 (RFID, HID), 30 ~ 50 (Mifare)		40~80 (RFID, HID), 30~50 (Mifare)	40~80 (RFID),30~50 (Mifare)
Verification time (sec)	< 1	FP: <1, Face: <2		Face: < 2	Face: < 2
FAR (%), FRR (%)	< 0.0001, < 1	FP: <0.0001, Face: <0.01, FP: <0.1, Face: <0.1		Face: < 0.01, Face: < 0.1	Face: < 0.01, Face: < 0.1
CARD TECHNOLOGY					
RFID: 64-bit, 125kHz	Yes	Yes		Yes	Yes
MIFARE: MFIS50/S70, 13.56MHz	Made to order	Made to order		Made to order	Made to order
HID: HID 1325, 26-bit, 125kHz	Made to order	Made to order		Made to order	×
COMMUNICATIONS					
Method	TCP/IP, RS232/485, USB disk <small>(Optional WiFi &amp; 3G)</small>	TCP/IP, RS232, RS485, USB disk <small>(Optional WiFi &amp; 3G)</small>		TCP/IP, RS232, RS485, USB disk <small>(Optional WiFi)</small>	TCP/IP, USB disk, USB client <small>(Optional WiFi)</small>
Baud rates	9600 ~ 115200	9600 ~ 115200		9600 ~ 115200	9600 ~ 115200
Wiegand	26-bit input/output	26-bit input/output		26-bit input/output	×
OPERATING ENVIRONMENT					
Temperature (°C)	0 ~ 45	0 ~ 45		0 ~ 45	0 ~ 45
Humidity (%)	20 ~ 80	20 ~ 80		20 ~ 80	20 ~ 80
Power input	DC 12V 3A	DC 12V 3A		DC 12V 3A	DC 12V 3A
TIME ATTENDANCE					
Siren	Built-in <small>(Optional external)</small>	Built-in <small>(Optional external)</small>	Built-in and external	Built-in <small>(Optional external)</small>	Built-in <small>(Optional external)</small>
Work codes	Yes	Yes		Yes	Yes
Fast Transaction Checking	×	Yes		Yes	Yes
MULTIMEDIA					
Voice	Yes	Yes		Yes	Yes
Display	3.5" 65k color TFT screen	4.3" 65k color TFT touch screen panel		3.0" 65k color TFT touch screen panel	3.0" 65k color TFT touch screen panel
Photo ID	Yes	Yes		Yes	Yes
Short Messaging	Yes	Yes		×	Yes
Day Light Saving Timer	×	Yes		Yes	Yes
Internal Backup Battery	×	Yes (DC12V, 2000m Ah)		×	×
ACCESS CONTROL					
EM Lock driving output	DC 12V 3A / relay output	DC 12V 3A / relay output		DC 12V 3A / relay output	DC 12V 3A / relay output
Alarm output	NO/NC	NO/NC		NO/NC	NO/NC
Anti passback	Yes	Yes	×	×	×



## We do better **CLOUD SOLUTIONS**

WORKFORCE • HUMAN RESOURCES • SECURITY

Over  
**20** years  
experience

**>150**  
Employees

**18**  
Awards

**150**  
Countries  
sales  
network

**20**  
Patents

**80**  
Programmers

**ISO**  
27001

**CMMi**  
Level 3



**FingerTec**  
Biometrics Time Attendance &  
Access Control System



**TimeTec TA**  
Time & Attendance  
Management System



**TimeTec Leave**  
Employee Leave  
Management System



**TimeTec Patrol**  
Guard Tour Management  
System



**TimeTec Hire**  
Talent Recruitment System



**TimeTec VMS**  
Visitor Management System



**TimeTec Profile**  
Cloud Employee Profile  
Management System



**TimeTec Access**  
Smart Access Control  
System



**TimeTec Parking**  
Cloud Parking System



**i-TimeTec**  
IoT Smart devices for smart  
home, smart community and  
smart office



**EpiCamera**  
Cloud Surveillance  
System



**i-Neighbour**  
Smart Residential  
Community



**i-Account**  
Smart Community  
Accounting System



**i-Merchants**  
Near Field Commerce platform  
for i-Neighbour, TimeTec VMS,  
TimeTec Parking



**i-AD**  
Advertisement platform for  
i-Neighbour, i-Merchants,  
TimeTec VMS, TimeTec Parking



**i-Environ**  
Intelligent Environment  
Sensing & Analytical Service



**Hubot XV & XP**  
AI Robot for Visitor Management  
& Guard Patrol





## OUR OFFICES

- **TIMETEC CLOUD SDN. BHD** (Malaysia)
- **HEADQUARTERS** No 6, 8 & 10, Jalan BK3/2, Bandar Kinrara, 47180, Puchong, Selangor, Malaysia. Tel: +603 8070 9933
- **R & D** No. C-02-05, C-02-07, C-02-08, C-05-05, C-05-07, iTech Tower, Jalan Impact, Cyber 6, 63000 Cyberjaya, Selangor, Malaysia.
- **TIMETEC DELPHINIDS (UAE)** 1901, 48 Burj Gate Tower, Sheikh Zayed Road, Downtown Dubai, UAE P.O.Box - 116171 +971 44519958, +971 505378012
- *General Email: [info@timeteccloud.com](mailto:info@timeteccloud.com)*