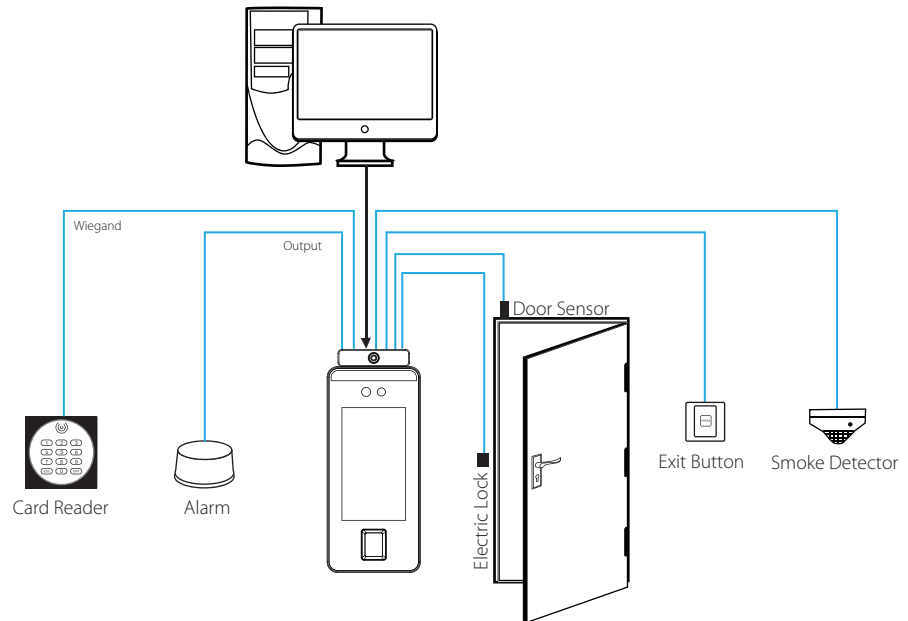


SYSTEM DIAGRAM



SPECIFICATIONS



MODEL	Smart AC1/TD
PRODUCT DIMENSION (W X H X D), mm	91.93 x 220 x 22.5
MICROPROCESSOR	900MHz Dual Core CPU
MEMORY	512MB RAM/8G Flash
STORAGE	
• Faces	6,000
• Fingerprint	6,000
• Palm	3,000
• Transactions	200,000
OPERATING ENVIRONMENT	
• Temperature	16°C ~ 32°C
• Humidity	10% ~ 90%
• Power Input	DC12V 3A
COMMUNICATIONS	
• Method	TCP/IP, RS485, Wi-Fi (Optional)
• Wiegand	Input/Output
ACCESS CONTROL	
• Lock Relay Output	Yes
• Alarm Output/Auxiliary Input	Yes
• Exit Button/Door Sensor	Yes
PREVENTIVE MEASURES	
• Mask Detection	Yes
• Fever Detection	Yes
• Fever Measurement Distance	30cm - 50cm
• Fever Detection Speed	>0.3s
• Temperature Measurement Range	34°C ~ 45°C
• Temperature Measurement Accuracy	±0.3°C

Note: Specifications are subject to change without prior notice.

Authorized Reseller: