



FAST & EFFICIENT

Protect your employees

Smart AC1/FTD

Face & Palm Verification Thermal Imaging Temperature Detection Terminal

Smart AC1/FTD is the Premium Version of the Smart AC model. This model highlights the visible light facial-recognition technology, and it comes with body temperature detection using thermal imaging engineering facial recognition algorithms and the latest computer vision technology. It supports both facial and palm verifications with large capacity and speedy recognition to improve security performance in all aspects. Smart AC1/FTD is contactless, which eliminates the risk of cross-contamination; it can detect body temperature and verify masked individual accurately. It is equipped with the ultimate anti-spoofing algorithm for facial recognition against almost all types of fake photos and videos attack. Smart AC1/FTD also can perform 3-in-1 palm recognition (palm shape, palm print and palm vein) in 0.35 sec per hand; and the palm data acquired will be compared with a maximum of 3,000 palm templates. Suitable to apply to any premises and public areas such as hospitals, factories, schools, commercial buildings, stations.



AI Face Recognition
Latest visible light facial recognition technology



Anti-Spoofing Checks
The technology has been improved with better security configuration to prevent crimes and spoofing attempts



Large Capacity
Store up to 6,000 faces, 6,000 fingerprints, 3,000 palms and 200,000 transaction logs



High-Speed Temperature Detection
0.1s Temperature Detection



Face Mask Detection
Deny access to those who are not wearing a mask



Multiple Verification Methods
Face/Palm/Fingerprint/Password



timeteccloud



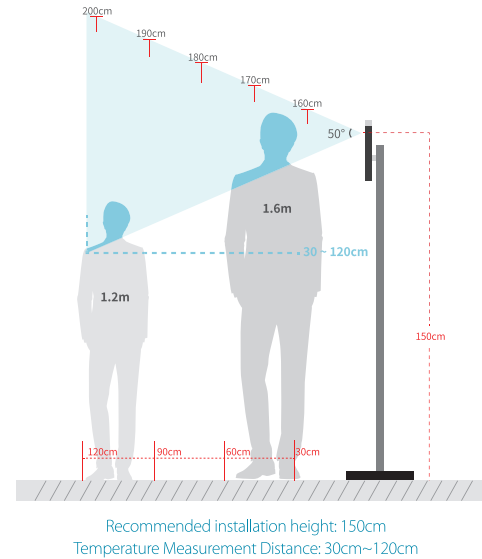
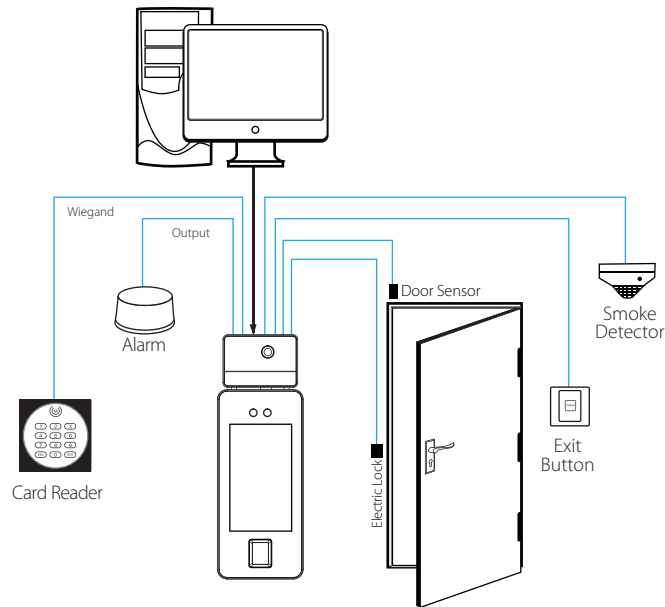
timeteccloud



info@timeteccloud.com

©2020 Timetec Cloud Sdn Bhd. All rights reserved.

SYSTEM DIAGRAM



SPECIFICATIONS



MODEL	Smart AC1/FTD
PRODUCT DIMENSION (W X H X D), mm	92 x 262 x 23.5
MICROPROCESSOR	900MHz Dual Core CPU
MEMORY	512MB RAM/8G Flash
STORAGE	
• Face	6,000
• Fingerprint	6,000
• Palm	3,000
• Transaction	200,000
OPERATING ENVIRONMENT	
• Temperature	16°C ~ 32°C
• Humidity	10% ~ 90%
• Power Input	DC12V 3A
COMMUNICATION	
• Method	TCP/IP, RS485, Wi-Fi (Upon request)
• Wiegand	Input/Output
ACCESS CONTROL	
• Lock Relay Output	Yes
• Alarm Output/Auxiliary Input	Yes
• Exit Button/Door Sensor	Yes
VERIFICATION	
• Facial Recognition Speed	≤ 1s
PREVENTIVE MEASURES	
• Mask Detection	Yes
• Temperature Detection	Yes
• Temperature Measurement Distance	30cm - 120cm (0.98ft ~ 3.94ft)
• Temperature Detection Speed	0.1s
• Temperature Measurement Range	20°C ~ 50°C
• Temperature Measurement Accuracy	±0.3°C, tested in a distance of 80cm under 25°C environment

NOTE:

- Facial verification for masked individuals will increase the False Acceptance Rate. Therefore, a Palm verification for masked individuals is recommended as an added verification option.
- Temperature measurement data is for reference only, it is not intended for medical use.
- Suitable for indoor environments without wind or direct sunlight.

Note: Specifications are subject to change without prior notice.

Authorized Reseller: