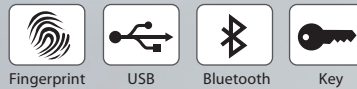


## Simply Sleek & Smart Smart Lock ML-10B



FingerTec Smart Lock ML-10B is a smart mechanical door lock designed to fit house doors, doors of a restricted compound or individual rooms. Replace your conventional key and lock old doorknobs to ML-10B for a more secure yet convenient door lock.

ML-10B comes with 3 unlocking credentials including fingerprint, mechanical key and a smartphone access through Bluetooth communication. This sleek door lock is embedded with independent clutch motor design under patent protection, providing you with 3 user group types to set. Determine the admin, regular users and temporary ones to access your homes, areas and office effectively.

ML-10B Bluetooth connectivity enables the use of i-TimeTec App to unlock your house doors and i-Neighbour App to manage facility booking of a neighbourhood effectively.

Leave the conventional door lock behind and heighten your security effortlessly with the sleek and robust ML-10B.



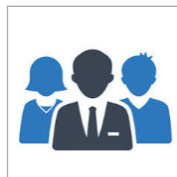
### 3 Unlocking Credentials

Use fingerprint, mechanical key or your smartphone with Bluetooth connection, ML-10B supports all



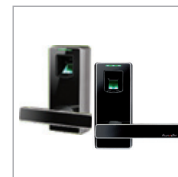
### Optimal Battery Life

Only 4 AA alkaline batteries required for over 6000 accesses, approximately a year of use and it comes with low-battery warning indication.



### 3 User Group Types

Gain better access control management with ML-10B User Group types, that clearly identifies the admins, regular users and temporary users



### Reversible Left-Right Open

ML-10B is designed with a sturdy bar latch with interchangeable handle, can be easily switched for left-open or right-open door



### User Capacity

Register as many users through a smartphone but for fingerprint, the capacity is limited to 10 admins, 60 regular users and 20 temporary users per door at a time.



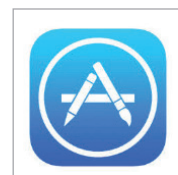
### Emergency Override Key

In case of emergency like a user losing a smartphone, ML-10B comes with a concealed override key to access a door



### Normally Open Type

Set the lock to Normally Open status to cater for offices or areas with regular visitor access





### Downloadable App


Android and iOS Apps for i-Neighbour and i-TimeTec are available for those who prefer to use smartphone for door access



## WEB LINK

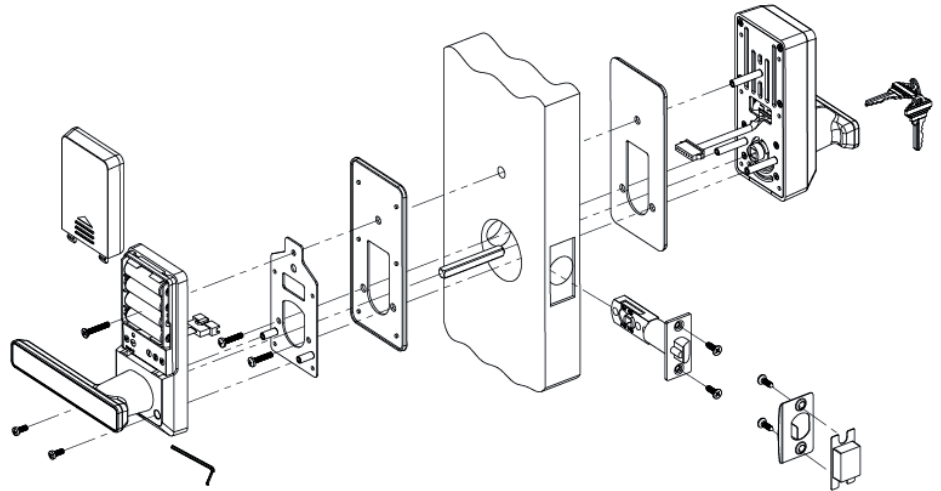
 Quick Start Guide  
<http://info.fingertec.com/ML10B-1>

 Installation Guide  
<http://info.fingertec.com/ML10B-2>

 User Guide  
<http://info.fingertec.com/ML10B-3>

## LAYOUT PLAN

### Installation Diagram



## SPECIFICATIONS

<b>MODEL</b>	ML-10B
<b>SURFACE FINISHING</b>	Zinc alloy
<b>TYPES OF SCANNER</b>	Optical fingerprint scanner
<b>ALGORITHM</b>	Biobridge VX 10.0
<b>RESOLUTION OF SCANNER (dpi)</b>	560
<b>PRODUCT DIMENSION (L X W X H), mm</b>	Front panel: 155 x 69x 35 (with handle) Back panel: 155x69x25 (with handle)
Thickness of door, mm	30-38 (optional), 39-46 (standard) 47-54 (standard), 55-60 (optional)
Door latch type	Single tongue (ML-10B) Double tongue (ML-10DB)
Inner lock switch	Yes
<b>STORAGE</b>	
Fingerprint templates	Admin (10), Normal users (60), Temporary users (20)
Bluetooth	Unlimited users for i-TimeTec App & i-Neighbour App
<b>FINGERPRINT &amp; VERIFICATION</b>	
Fingerprint	1:N
Recommended fingerprint per user ID	2
Fingerprint placement	Any angles
Verification time (sec)	< 1
FAR (%)	< 0.0001
FRR (%)	< 1
<b>BLUETOOTH VERIFICATION</b>	
Communication	Bluetooth 4.0
<b>OPERATING ENVIRONMENT</b>	
Temperature (°C)	- 20 to - 55
Humidity (%)	20 ~ 80
Power input	4 x 1.5v AA battery for 6000 operations
Power consumption – static (µA)	< 35
Power consumption – activity (mA)	< 135
Power consumption – driving (mA)	< 200
Antistatic voltage (V)	> 1500
Low battery warning voltage (V)	< 4.5
<b>BACKUP UNLOCK MECHANISM</b>	Battery & mechanical key
<b>MOBILE APP</b>	Android 4.0.2 and above, iOS 8.0 and above
<b>APP (ANDROID &amp; IOS)</b>	i-TimeTec , i-Neighbour
<b>APP LANGUAGE</b>	Arabic, Chinese Simplified and Traditional, English, Hindi, Indonesian, Malay, Nepali, Spanish, Thai, Turkish, Vietnamese. Other languages are available upon request.



### Packaging

Dimension (mm) : 298 (L) x 123 (W) x 222 (H)  
 Weight : 3.15 kg

NOTE: Specifications are subject to change. Check <http://product.fingertec.com> for latest product information.

Authorized Reseller:



**FINGERTEC**  
[www.fingertec.com](http://www.fingertec.com)  
 © 2019 Timetec Cloud Sdn Bhd. All rights reserved.