



Ticketless Kiosk Solves It All

TPK-2



TimeTec Parking Kiosk

The slim and weatherproof TimeTec Parking Kiosk, TPK-2 is designed to stand extreme indoor and outdoor environments for long-lasting use, and it is a sophisticated parking machine for operators/building owners to ensure safe round-the-clock collection of parking fees. TPK-2 supports Touch 'n Go card, credit/debit cards for cashless payment.

TPK-2 has been seamlessly integrated with the cutting edge cloud technology of TimeTec Parking system, making it suitable for both casual and seasonal parking, and across multiple parking sites. It provides a better parking experience for users, which increases parking revenue for building owners.



Ticketless

Cut cost, going green, smoother traffic flow and no misplacing parking ticket issue for users



PCI-DSS Compliance

Security standard for Visa, Master and Debit card transactions, end-to-end advanced encryption



Multiple Cashless Payment Methods

TnG card, Credit/Debit card, reduces the cost and pilferages in cash handling



Multiple Parking Methods

Support TnG card, Credit/Debit card, Mifare Card and QR Code



Waterproof IP65

Outdoor-ready. Withstand heavy rain and extreme high temperature



TimeTec Parking System

A comprehensive parking system to cater to casual and season parking users for multiple sites



Intercom (option)

IP microphone and a speaker for voice communication during emergency as option



4G Communications

4G broadband, provides capabilities defined by ITU in IMT Advanced



Mobile App

Supports Android and iOS TimeTec Parking mobile App.



timeteccloud



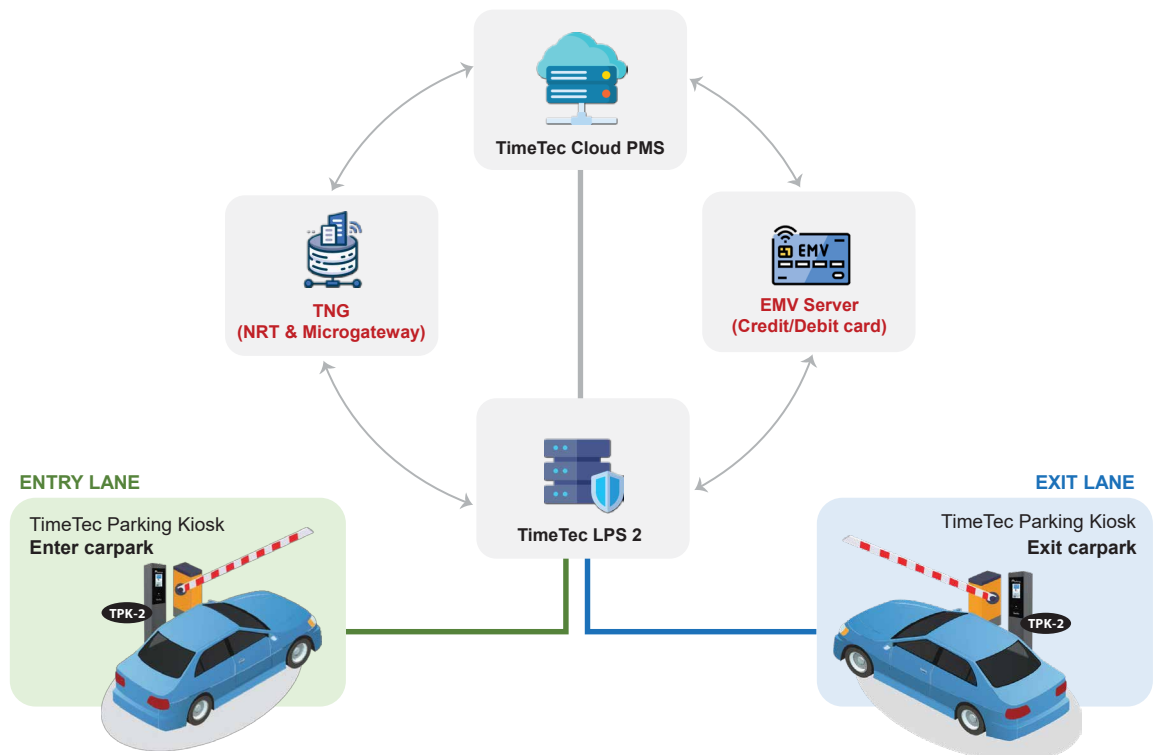
timeteccloud



parking@timeteccloud.com

©2024 Timetec Parking Sdn Bhd. All rights reserved.

SYSTEM DIAGRAM



SPECIFICATIONS



MODEL	TPK-2
SURFACE FINISHING	Slim, Epoxy Powder Coated
TYPE OF SCANNER	Non-Touch Colour Screen 3.2" Bright colour LCD screen
READER	3 in 1 Reader (TnG, Credit Card/ Debit Card & Season Pass)
DIMENSION (L X W X H), mm	250(L) x 200(W) x 1320(H)
WEIGHT	20kg
MICROPROCESSOR	ARM9 Cortex - A5 600MHz Processor • 512MB (Internal) • 256MB (RAM)
COMMUNICATION	Support 4G, WIFI, LAN, 10/100Mbps Ethernet TCP, SSL, TFTP and most internet protocols, Supports 2 x USB (OTG and HOST), 2 x RS232 Serial up to 115200Kbps
INTERCOM	Optional*
OPERATING ENVIRONMENT	• Waterproof rating: IP65 • Temperature: -20°C to 60°C • Humidity: 10% ~ 90% • Power Supply: 12 VDC 3A com with Backup Battery
CONTACTLESS INTERFACE	Supports ISO 14443 Type A, B and C Supports ISO 18092 Peer to peer NFC Supports EMVCo Level 1
CARD SUPPORT	MIFARE DESFire®, MIFARE Classic, MIFARE Plus®, MIFARE Ultralight®, FeliCa, CIPURSE™, EMV® Contactless
PAYMENT METHOD	Visa/Master Debit or Credit Card Touch n' Go Card
ENCRYPTION & SECURITY	DES, 3DES, AES, SHA, RSA, DSA, ECC, TRNG
READER SOFTWARE PLATFORM	Linux
SOFTWARE	• Cloud system: TimeTec Parking System • Mobile App: TimeTec Parking App for Android, iOS & Huawei
SOFTWARE LANGUAGE	English, Malay, Chinese (Traditional), Chinese (Simplified), Spanish, Thai, Indonesian, Arabic, Vietnamese, Portuguese, Hindi, Japanese and Turkish

Note: Specifications are subject to change without prior notice.

Authorized Reseller: