



timeTec
www.timeteccloud.com

Back to Work Safely Program

Proposed by TimeTec

Index

- 01 **Covid-19 Creates A Dilemma:**
Public Health vs Economy
- 02 **Why “Back To Work Safely” Program?**
Revive & Protect
- 03 **How Does It Work?**
- 04 **How To Implement?**

Why “Back to Work Safely” Program?

Covid-19 creates a dilemma



Public Health Threaten If Business Reopens

- Possible of new cluster
- Possible of new wave of Covid-19
- Efforts of MCO may be wasted if reopening without proper control



Economy/SME Businesses Threaten If Lockdown Prolongs

- The longer the shutdown, the higher rate of businesses collapsed
- SME workers lost their jobs
- Cashflow issues
- Economy downturn

“Back to Work Safely” Program for SMEs

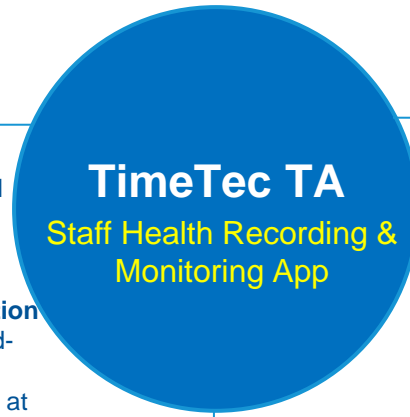
Revive & Protect



Protect

Public Health / MOH

- Record and monitor staff health
- Trace any interaction with PUI, close and casual contact
- Reducing the risk of Covid-19 when the MCO is lifted
- Providing relevant and precise information to the Ministry in the effort to combat Covid-19.
- An effective tool to help to detect cases at earlier stage hence prompt action can be taken



Government / MITI

- Enable SMEs business to **revive business** while at the same time **protect the public health**
- **Centralize recording system** for SME workers
- Help to recover the economy sooner to **avoid severe unemployment rate**
- **A step towards digitization of the nation.**

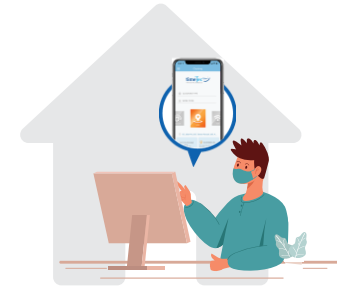
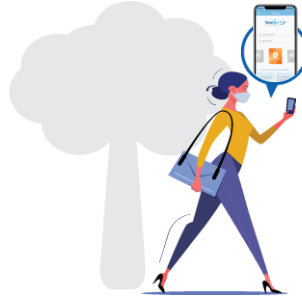
Revive SMEs / Economy



- Help to **restart the business safely**
- **Monitor and detect** any Covid-19 suspect cases and report
- Reducing the fear of workers for going back to work
- **Cost effective** on monitoring the workers' health conditions and sending report when required by MITI
- Easy to use and manage
- **Able to revive business sooner** hence continue to pay taxes
- The business community at large will be introduced to the **cloud-based solution to pave the way to digitalization.**
- After the post MCO precautionary period, the same system can be used to manage the staff time & attendance which they can apply subsidy under the Mdec's SME Digitalization Grant to help SME in **digital transformation** process

How Does It Works?

Back to Work Safely with TimeTec TA Staff Health Recording & Monitoring App



On-Premise Clocking

Staff clock to prove of presence by using TimeTec TA smartphone App before admin taking his/her body temperature. 4 clocking options: Wifi, Beacon, NFC and GPS.

Social Distancing, Contactless Transactions and Health Screening

On-the-Go Clocking

Clock attendance using TimeTec TA smartphone App with GPS to track location and persons met on daily basis.

Social Distancing, Contact Traceability

Work from Home Clocking

Clock attendance using TimeTec TA smartphone App with GPS at home as a proof that no body temperature needed to be taken.

Social Distancing, Contactless Transactions, Contact Traceability

TimeTec TA

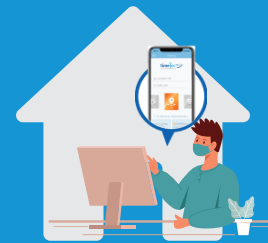
Staff Health Recording & Monitoring App



On Premise Clocking



On-The-Go Clocking



Work from Home Clocking

✓ Monitoring

Record 3 months staff body temperature, comply with the Regulation 11 of the Prevention and Control of Infectious Diseases (No.3) Regulations 2020

✓ Traceability

Trace visits of sales & support staff for any contact of Covid-19 contraction: PUI, close contact & casual contact

✓ Notification

Notify superior if staff is fever. Audit trail of changes on the temperature data

✓ Contactless

Staff using their own smart phones to do attendance clocking

✓ Reporting

Automate all SMEs health reports send to MITI

General Benefits

- Save cost, staff using their own device
- Mobile clocking options: GPS, WiFi, NFC, QR code and Beacon
- Centralized data
- Real-time attendance monitoring
- Schedules, shifts and overtime made easy
- Linkable to various payrolls
- Memos & announcements
- Traceable mileage claim
- 35 reports
- As part of Digital Transformation Acceleration Program Malaysia

Temperature Record

TimeTec TA has a feature to record staff daily temperature record for precaution and reference purposes. Notify superior if staff is fever. Audit trail of changes on the temperature data.

Health Screening

Take precautionary measures to ensure the safety of your workplace. Screen your employees and fill in their health status in the provided fields. View the full listing at Report > Health Screening Report

Attendance Date:

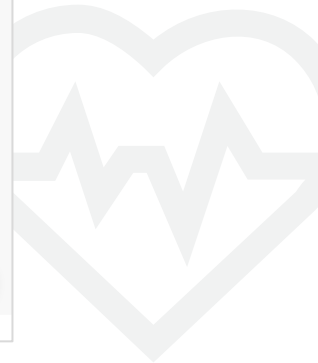
User ID	Name	Organization Structure	Temperature	Remark
2074	Muhammad Akif Bin Fauzi	Research & Development (Epicamera)		
2075	Mohd Nazri Syah Bin Sani	Research & Development (Epicamera)		
2076	Goh Yong Keong	Research & Development (Epicamera)		
2079	Zafirah Binti Esa	Research & Development (Epicamera)		
2089	Nuratiqah Binti Aznam	Research & Development (Epicamera)		
2090	Nurulmanja Atiqah Binti Maliki	Research & Development (Epicamera)		
2091	Luqman Bin Mohd Nasir Shah Ngui	Research & Development (Epicamera)		
2092	MUHAMMAD SYAZWAN BIN SAL AZIZI	Research & Development (Epicamera)		
2095	Izzaty Binti Anuar	Research & Development (Epicamera)		
2094	Danial Sim Wei Jie	Research & Development (Epicamera)		

Pages 2 of 8 (153 users) | 1 | 2 | 3 | 4 | 5 | 6 | 7 | 8 | | 50 | 100

[Terms of Use](#) | [Privacy Policy](#) | [Guarantee](#) | [SLA](#) | |

[New Features](#) | [Blog](#) | [Notification](#) | [Message](#) | [Glossary](#) | [Language](#)

Comply with the **Regulation 11 of the Prevention and Control of Infectious Diseases (No.3) Regulations 2020** to record staff daily body temperature.



Temperature Reports

TimeTec TA can cater the reports to suit MITI requirements:

- Email the health screening report every month end automatically.
- MITI provide FTP server login credential for us to push the report to their server.
- MITI to provide API for us to send data to their server.

Monthly Health Screening Summary Report



Monthly Health Screening Summary

April 2020

TimeTec Group > TimeTec Computing Sdn Bhd > Research & Development

User ID	Name	1 Wed	2 Thu	3 Fri	4 Sat	5 Sun	6 Mon	7 Tue	8 Wed	9 Thu	10 Fri	11 Sat	12 Sun	13 Mon	14 Tue	15 Wed	16 Thu	17 Fri
3120	Shuila Binti Mohd Shahid	36.9	36.9	36.3			36.5	36.3	36.5	36.6	37.1			36.3	36.9	37.1	38.8	
3183	Norsyahida Binti Abdullah	36.5	36.9	36.3			36.5	36.3	36.5	36.6	37.1			36.3	36.9	37.1	38.8	

TimeTec Group > TimeTec Computing Sdn Bhd > Sales & Marketing

User ID	Name	1 Wed	2 Thu	3 Fri	4 Sat	5 Sun	6 Mon	7 Tue	8 Wed	9 Thu	10 Fri	11 Sat	12 Sun	13 Mon	14 Tue	15 Wed	16 Thu	17 Fri
3143	Leow Khar Keong	36.4	36.9	36.3			36.5	36.3	36.5	36.6	37.1			36.3	36.9	37.1	36.8	36.3
3037	Phoon Mee Ling	37.4	36.9	36.3			36.5	36.3	36.5	36.6	37.1			36.3	36.9	37.1	36.8	36.3
3267	Syed Mohd Firdaus Bin Syed Mohd Fuzi	36.3	36.9	36.3			36.5	36.3	36.5	36.6	37.1			36.3	36.9	37.1	36.8	36.3

Monthly Health Screening Summary Report



TimeTec Computing Sdn. Bhd.

Health Screening Report (01/04/2020 - 30/04/2020)

01/04/2020

TimeTec Group > TimeTec Computing Sdn Bhd > Research & Development

User ID	Name	Temperature (°C)	Remark	Created by	Created DateTime
3120	Shuila Binti Mohd Shahid	36.9		Farah Wahidda Binti Brohan	25/04/2020 01:38 PM
3183	Norsyahida Binti Abdullah	36.5		Farah Wahidda Binti Brohan	25/04/2020 01:38 PM

TimeTec Group > TimeTec Computing Sdn Bhd > Sales & Marketing

User ID	Name	Temperature (°C)	Remark	Created by	Created DateTime
3143	Leow Khar Keong	36.4		Farah Wahidda Binti Brohan	25/04/2020 01:33 PM
3037	Phoon Mee Ling	37.4		Farah Wahidda Binti Brohan	25/04/2020 01:35 PM
3267	Syed Mohd Firdaus Bin Syed Mohd Fuzi	36.3		Farah Wahidda Binti Brohan	25/04/2020 01:36 PM

Other Features of TimeTec TA

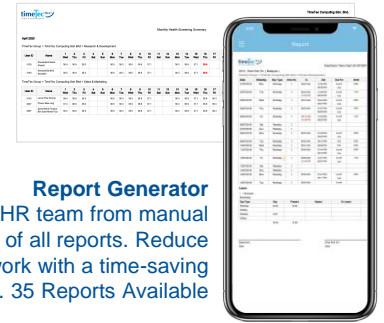


Contactless Clocking

Apart from TimeTec TA App, TimeTec TA is compatible to FingerTec facial recognition product such as Face ID 3, Face ID 4, QF Plus, Smart AC-1/TD

Easily Accessible Portal

Authorized HR admin can access to TimeTec TA database and process salary calculation at home anytime anywhere. No VPN is required



Report Generator

Relieve HR team from manual production of all reports. Reduce redundant work with a time-saving approach. 35 Reports Available



Automated Working Hours & Overtime Calculation

Verify attendance according to assigned shifts and overtime schedules.



Centralized System

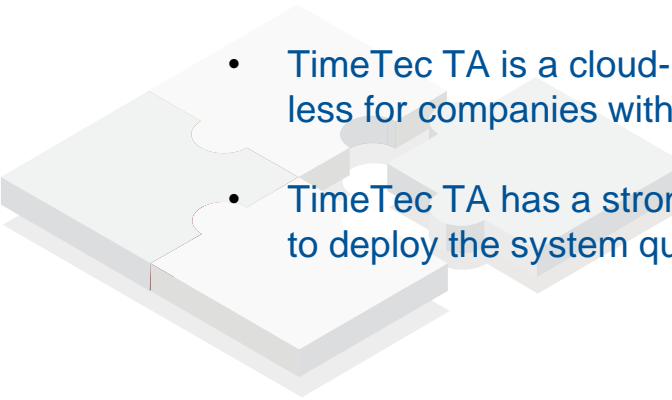
One single login to access and fetch all **real-time** data. Best accommodate for multi-branch companies.



How To Implement?

SMEs in Malaysia is
907,000

Involving
6.7 million workers

- 
- TimeTec TA is a cloud-based solution that can be deployed DIY within 60 minutes or less for companies with 50-100 staff, self-learned video available.
 - TimeTec TA has a strong technical and support team that can assist all companies to deploy the system quickly and effectively.