



# Revolutionize Visitor Parking

## Smart Income for Your Community

Transform your residential parking from a manual headache into a [seamless revenue generator](#). By integrating [License Plate Recognition \(LPR\)](#) with [DuitNow QR](#), your Management Office (MO) or JMB can effortlessly monetize visitor parking to boost your sinking fund and maintenance accounts.



### Why LPR + DuitNow QR?



This "Smart Parking" approach uses automation to turn overnight stays or specific community parking rules into community upgrades while generating extra income.

### 4 Key Benefits

#### Automatic Revenue Generation

Effortlessly collect fees from visitors. If community is charging RM10 per overnight-stay vehicle, 20 cars a day, will generate extra income of RM6,000 a month.

#### Enhanced Security & Traceability

Every vehicle entry and exit is digitally recorded, improving visibility and incident investigation.

#### Higher Property Appeal & Value

A modern, cashless parking experience signals a well-managed, tech-forward community.

#### Seamless System Integration

Works natively with TimeTec iNeighbour and i-Account, and can integrate with third-party resident apps.

### Why TimeTec Parking?

#### Leverage Existing Infrastructure

Utilizes existing barrier gates and LPR ready cameras where available.

#### Zero Capex (Capital Expenditure)

Offered a rental-based solution with no initial investment cost.

#### Cloud-Based Management

All transactions and logs are managed via a secure web portal for real-time access.

#### Settlement & Audit Transparency

A Settlement Portal to ensure transparency and ease of auditing.

#### Direct Funds Transfer

DuitNow QR integration ensures funds are transferred to the building's official bank account.

#### Consolidation & Reconciliation

Simplifying monthly reporting and financial tracking.

#### Support eWallet Direct Feature (Optional)

For visitors who have pre-linked their car plate to eWallet apps enjoy automatic fee deduction, creating a frictionless experience.

#### Compliance

Package includes mandatory components such as e-Invoicing module, metrology license application and annual renewal assistance, and parking signage to ensure regulatory alignment.

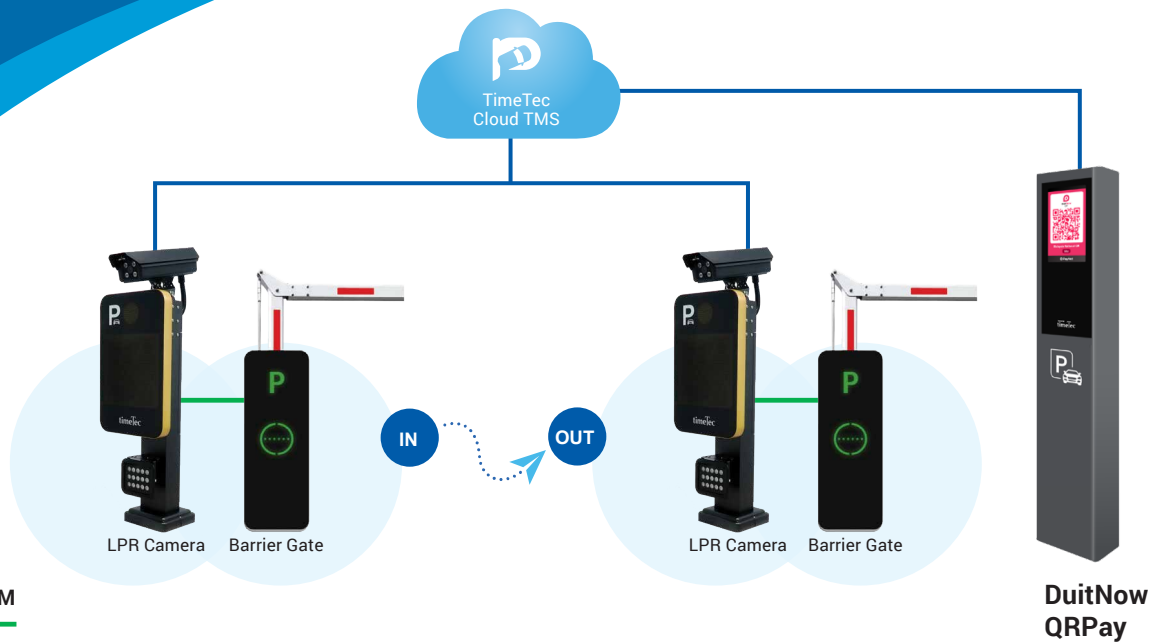


### How It Works for Visitors

**Entry:** The LPR camera captures the plate number and logs the entry time automatically.

**Stay:** Visitors enjoy their stay based on rules set by the MO, such as a "Grace Period" (e.g., first 2 hours free) or a fixed "Overnight Rate".

**Pay & Exit:** Before leaving, the visitor scans a dynamic QR code at the DuitNow QRPay Kiosk. Once the payment is made, the barrier uplifts for the visitor to exit.



## Specifications

### CAMERA (V Model )



### HOUSING PARAMETERS

### BODY HOUSING

Camera Housing	Yes
Image Sensor	1/2.8" starlight-level CMOS
Max Resolution, Min. illumination	2592*1944 (5MP), Color: 0.01Lux
Shutter Speed & Lens	0-1ms or customized (2.8~12mm lens)
Image Setting Video	Saturation, Brightness, Contrast, image flip, gain, exposure time
Compression	H265/H264/MJPEG/intelligent detection structured data output
Picture Format & Analytic	JPEG with configurable quality, Support LPR
LPR Accuracy	99.80%
Comprehensive Capturing Recognition Rate	≥99.99%
Working Temperature & Humidity	-25°C to 70°C, 90% or less (non-condensing)
Network Interface	1 channel 10/100Mbps adaptive Rj45
Communication Interface	IO output: 2 channel, IO input: 4 channel, RS485: 1 channel
Extra Deep Learning Technics	2 million starlight imaging effect, dual core processor CNN acceleration
LPR Algorithm Supports	Malaysia, Singapore & Thailand Car Plates
Power Supply	Support 9 ≤ 15V DC, standard 12V/2A
Resolution, Color	F3.75, 64*64 Dots, Red/Green
Input Power	AC110/220V +/- 10% 50/60Hz (With buite in power adapter)
Working, Max Power	Voltage DC5V, 10W
Stand Size	60*1200mm
Working Temperature	From -40°C to +80°C
IP Rating	IP42 Dustproof & waterproof function
Barrier Open	On Board
Design & Material	Bare Pole, epoxy powder coated
Protection Rate	IP65
Fill Light	Option

Authorized Reseller