

# Beyond Biometrics

Access Control, Time Attendance & IoT



\*Selected models



FingerTec Worldwide



Fingertec



info@fingertec.com

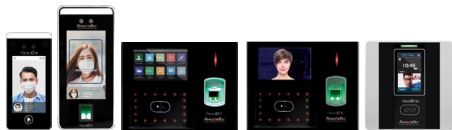
[Read More](#)

## SOFTWARE & APPLICATIONS FOR BIOMETRIC DEVICES

# ingress

### Time Attendance & Access Control

- 33 Reports For Data Analysis
- Supports Surveillance From Multiple PCs Concurrently
- Push Notifications When Door Events Are Triggered



## TCMSV3

### Time Attendance

- Support Normal, Overnight and Multiple Shift Configurations
- Group, Personal Duty Rosters & Holiday Settings
- Simplify Payroll Integration by Exporting Attendance Data



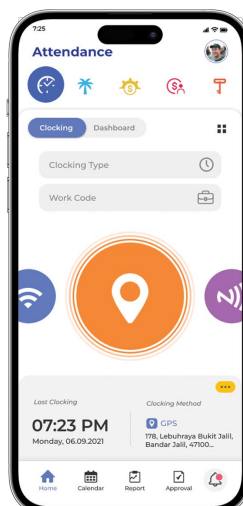
Full Hardware  
Specification



Full Software  
Specification



## APPLICATION



TimeTec Attendance  
Cloud Time Attendance



TimeTec Access  
Cloud Access Control



TimeTec Visitor  
Cloud Visitor Management

*\*Actual UI from TimeTec HR app*

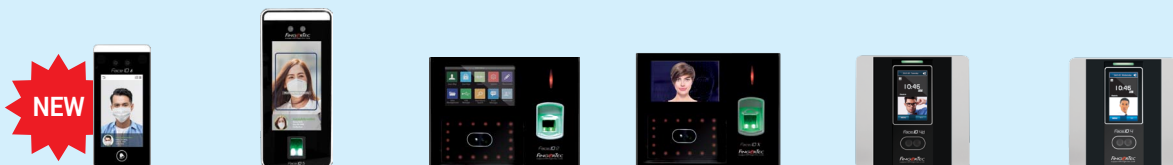


# Face Recognition

Access Control & Time Attendance

Access Control & Time Attendance

Time Attendance



Model	Face ID 6	Face ID 5	Face ID 2	Face ID X	Face ID 4D	Face ID 4
<b>Dimension</b>	73 x 23 x 158	92 x 23 x 203	194 x 110 x 145	194 x 110 x 145	151 x 26 x 150	151 x 26 x 150
<b>Templates</b>	Face: 1k Palm: 800 Card: 1k	Face: 6k Fingerprint: 6k Palm: 3K Card: 10k	Face: 1,200 Fingerprint: 10k Card: 10k	Face: 3k (1:N), 30k (1:1) Fingerprint: 10k Card: 10k	Face: 3k Card: 10k	Face: 3k Card: 10k
<b>Transactions</b>	150,000	200,000	200,000	1,000,000	200,000	200,000
<b>Verification Method</b>	Face, Palm, Password	Face, Fingerprint, Palm, Card & Password	Face, Fingerprint, Card & Password	Face, Fingerprint, Card & Password	Face, Card & Password	Face, Card & Password
<b>Communication Method</b>	TCP/IP, USB Host, RS485 *WiFi 2.4/5 GHz	TCP/IP, RS485 *WiFi 2.4/5 GHz	TCP/IP, RS232, RS485, USB disk *WiFi 2.4GHz & *4G	TCP/IP, RS232, RS485, USB disk *WiFi 2.4GHz & *4G	TCP/IP, USB Host *WiFi 2.4GHz	TCP/IP, USB Host *WiFi 2.4GHz
<b>Verification Time</b>	Face: <1s	Fingerprint: <1s, Face: <2s, Palm: <0.35s	Fingerprint: <1s, Face: <2s	Fingerprint: <1s, Face: <2s	Face: <2s	Face: <2s

\*Optional



## Controller

Security Hub for Smart Control



Model	INGRESSUS I	INGRESSUS II	INGRESSUS IV
<b>Dimension</b>	186 x 106 x 36	186 x 106 x 36	226 x 106 x 36
<b>Templates</b>	Fingerprint: 3k, Card: 30k Password: 30k	Fingerprint: 3k, Card: 30k Password: 30k	Fingerprint: 3k, Card: 30k Password: 30k
<b>Transactions</b>	100,000	100,000	100,000
<b>Verification Method</b>	Wiegand	Wiegand	Wiegand
<b>Communication Method</b>	TCP/IP	TCP/IP	TCP/IP

## Add On

Enrolment



<b>Model</b>	Ofis-Z
<b>Dimension</b>	45 x 78 x 40
<b>Supporting OS</b>	MS Windows/ MS Internet Explorer (IE 9)
<b>Pixel Resolution</b>	512 dpi (average x, y over the scanning area)
<b>Scan Data</b>	8-bit of greyscale (256 levels of grey)
<b>Compatibility</b>	USB 1.0, 1.1, 2.0 (Full speed) specifications



## Card

### Access Control & Time Attendance



**Kadex**

**Model**

**Dimension**

92 x 49 x 137

**Templates**

Card : 30k

**Transactions**

50,000

**Verification Method**

Card & Password

**Communication Method**

TCP/IP, RS232, RS485, USB disk

**Verification Time**

Card: <1s



## IoT

### QR Code & Smart Door



**QF Plus**



**BLE-2**

**Model**

**Dimension**

158 x 74 x 15.6

85 x 96 x 33

**Templates**

Face: 6k

N/A

**Transactions**

1,000,000

Unlimited

**Verification Method**

Face &  
QR Code

Mobile  
App

**Communication Method**

Wi-Fi 2.4GHz,  
Bluetooth,  
4G Wireless Broadband,  
USB & GPS

Bluetooth Low  
Energy (BLE) 4.2,  
Wiegand 26-bit input



# Fingerprint Access Control & Time Attendance



## Access Control & Time Attendance

## Time Attendance



Model	R2	R3	H2i	Q2i	TA500	TA100C	TA200 PLUS
Dimension	94 x 50 x 189	78 x 32 x 190	78 x 50 x 150	200 x 56 x 160	184 x 38 x 134	190 x 52 x 140	200 x 56 x 160
Templates	Fingerprint: 3k Card: 1k	Fingerprint: 3k Card: 10k	Fingerprint: 1.5k Card: 10k	Fingerprint: 10k Card: 10k	Fingerprint: 2k *Card	Fingerprint: 8k *Card	Fingerprint: 10k Card: 10k
Transactions	120,000	100,000	100,000	200,000	80,000	200,000	200,000
Verification Method	Fingerprint Card & Password	Fingerprint Card & Password	Fingerprint & Card	Fingerprint Card & Password	Fingerprint Password & *Card	Fingerprint & Password	Fingerprint, Card & Password
Communication Method	TCP/IP, RS232, RS485, USB disk	TCP/IP, RS232, RS485, USB disk	TCP/IP, RS485, USB disk	TCP/IP, RS232, RS485, USB disk *WiFi 2.4GHz & *4G	TCP/IP, USB disk *WiFi 2.4GHz	TCP/IP, USB disk *RS232, *RS485, *WiFi 2.4GHz	TCP/IP, USB disk *RS232, *RS485 & *WiFi 2.4GHz **4G
Verification Time	Fingerprint: <1s	Fingerprint: <1s	Fingerprint: <1s	Fingerprint: <1s	Fingerprint: <1s	Fingerprint: <1s	Fingerprint: <1s

\*Optional

\*\*Only applicable to non-POE devices



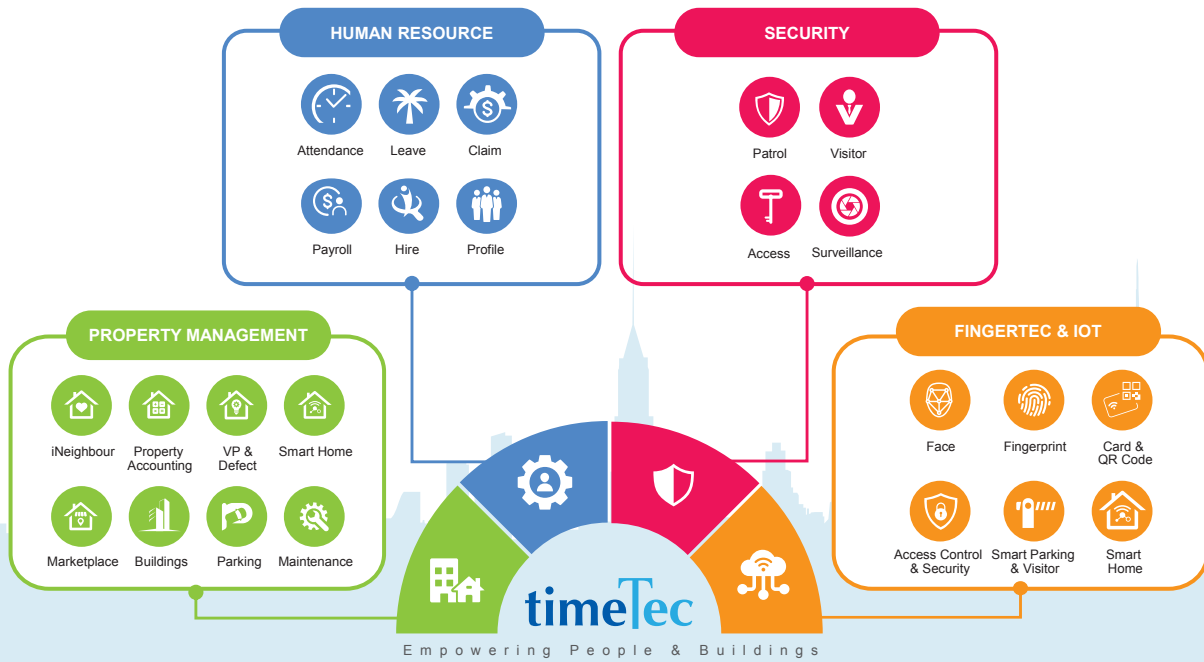
## Secondary Terminal Cost-Effective Access Solution



Model	i-Kadex	R2c	R3c	QR110
Dimension	55 x 15 x 100	64 x 42 x 135	80 x 40 x 125	86 x 40 x 86
Templates	Storage in Primary Terminal	Storage in Primary Terminal	Storage in Primary Terminal	Storage in Primary Terminal
Transactions	Storage in Primary Terminal	Storage in Primary Terminal	Storage in Primary Terminal	Storage in Primary Terminal
Verification Method	Card	Fingerprint (1:N) & Card	Fingerprint (1:N) & Card	QR Code, RFID EM Card 125KHz, MiFare Card13.56 MHz (Made to order)
Communication Method	Wiegand	RS485 (Connects to Primary Terminal)	RS485 (Connects to Primary Terminal)	Wiegand, RS485
Verification Time	Managed by Primary Terminal	Managed by Primary Terminal	Managed by Primary Terminal	Managed by Primary Terminal

# TIMETEC ONE

Where all TimeTec Systems are Combined



iNeighbour timeTec<sup>HR</sup> FINGERTEC

20+  
Years on the  
Market

400+  
Active  
Resellers

25+  
Patents

15+  
Languages

ISO  
27001

CMMI  
Level 3

PDPA &  
GDPR  
Compliance

SLA

## CLIENTELE

